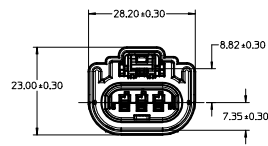
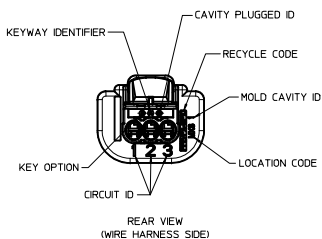
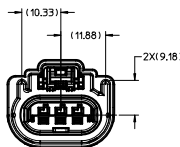


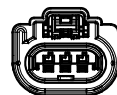
ASSEMBLY MATERIALS				
ITEM	DESCRIPTION	COLOR	MOLEX P/N	RECYCLE CODE
1	RECEPTACLE HOUSING	SEE CHART	SEE CHART	PPE/PA GF10
2	TPA	NATURAL	342520001	PBT-GF30
3	CPA	RED	340660001	PBT-GF30
4	PERIMETER SEAL	BLUE	342530001	SILICON 50 DUROMETER
		BLUE	342530002	SILICON 50 DUROMETER



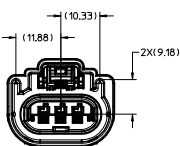
DUAL KEY OPTION 'A'



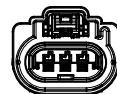
DUAL KEY OPTION 'B'



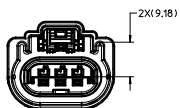
SINGLE KEY OPTION "B"



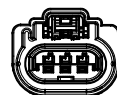
DUAL KEY OPTION "C"



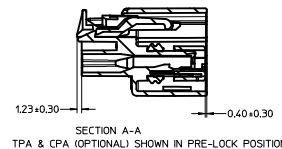
SINGLE KEY OPTION "C"



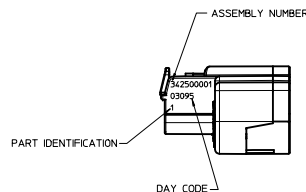
DUAL KEY OPTION 'D'



SINGLE KEY OPTION 'D'



TPA & CPA (OPTIONAL) SHOWN IN PRE-LOCK POSITION



UNLESS OTHERWISE SPECIFIED:

1. PART CONFORMS TO SAE/USCAR-2 REV. 4 (05/04), EXCEPT AS FOLLOWS:
2. DESIGNED TO MATE WITH DISK/CAN CONNECTION AS SPECIFIED IN USCAR/EWCAP
DRAWING NO 150-S-903-1-202. ALL OPTION A-D, REV A. DATED 10/19/99.
3. ALSO WITH THE DISK CONNECTION AS SPECIFIED IN USCAR/EWCAP
DRAWING NO 150-S-903-1-202. ALL OPTION A-D, REV A. DATED 10/19/99.
4. ASSEMBLY SHIPPED WITH TPA IN PRE-LOCK POSITION (SEE SECTION A-A
P/LOCOK). UPON FULL TERMINAL ASSEMBLY, TPA MUST BE SNAPPED INTO
ITS FINAL LOCK POSITION AFTER TERMINALS ARE ASSEMBLED.
5. OPTIONAL CPA SHOWN IN ALL VIEWS. SEE TABLE FOR SPECIFIC ASSEMBLY
OPTION AND NUMBER.
6. IF PREFERRED TERMINALS SEE MOLEX DRAWING 50-34083-002
FOR OPTIONAL TERMINALS. SEE MOLEX DRAWING 50-34083-001.

[illegible]

ENTER DESCRIPTION EC NO. UAL002-1232 DOWNSIDE CHKD: 2012/04/13 APPR: MOSHY		QUALITY SYMBOLS ▽=0 ▽=0 ▽=0		GENERAL TOLERANCES (UNLESS SPECIFIED) <table><tr><td></td><td>mm</td><td>INCH</td></tr><tr><td>4 PLACES ±</td><td>0.125</td><td>±---</td></tr><tr><td>3 PLACES ±</td><td>0.10</td><td>±---</td></tr><tr><td>2 PLACES ±</td><td>0.10</td><td>±---</td></tr><tr><td>1 PLACE ±</td><td>0.3</td><td>±---</td></tr><tr><td colspan="3">ANGULAR ± 3°</td></tr></table>			mm	INCH	4 PLACES ±	0.125	±---	3 PLACES ±	0.10	±---	2 PLACES ±	0.10	±---	1 PLACE ±	0.3	±---	ANGULAR ± 3°			DIMENSION STYLE MM ONLY DRAWN BY DATE P. L. P. I. M 2003/09/03 CHECKED BY DATE		SCALE 2:1 DESIGN UNITS METRIC		THIRD ANGLE PROJECTION	
	mm	INCH																											
4 PLACES ±	0.125	±---																											
3 PLACES ±	0.10	±---																											
2 PLACES ±	0.10	±---																											
1 PLACE ±	0.3	±---																											
ANGULAR ± 3°																													
RECEPTACLE ASSEMBLY 3-WAY USCAR CONNECTOR 1.5MM CABLE SEAL		MOLEX INCORPORATED		CHART SD-34250-002		SHEET NO. 1 OF 1																							
DRAFT WHERE APPLICABLE MUST REMAIN WITHIN DIMENSIONS		SIZE A		THIS DRAWING CONTAINS INFORMATION THAT IS PROPRIETARY TO MOLEX INCORPORATED AND SHOULD NOT BE USED WITHOUT WRITTEN PERMISSION																									

Mouser Electronics

Authorized Distributor

Click to View Pricing, Inventory, Delivery & Lifecycle Information:

Molex:

34250-3065