

THIS DRAWING IS UNPUBLISHED.

RELEASED FOR PUBLICATION

© COPYRIGHT 20

BY -

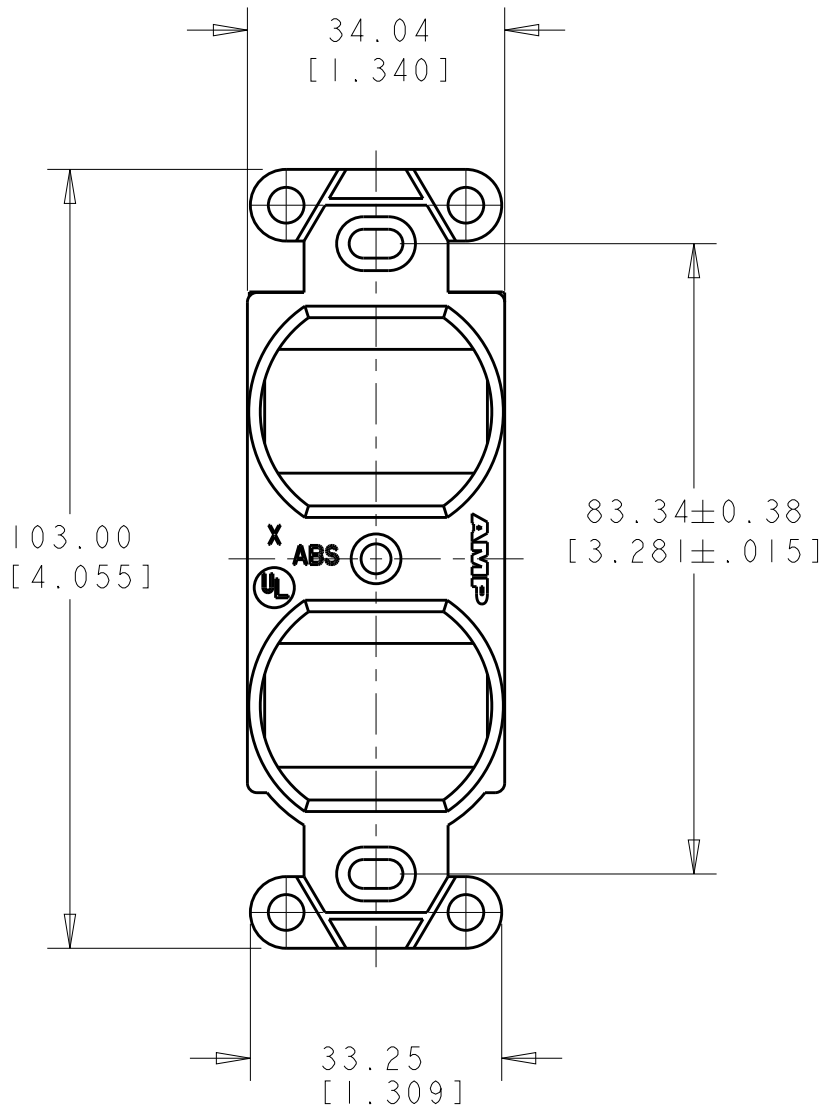
ALL RIGHTS RESERVED.

REVISIONS

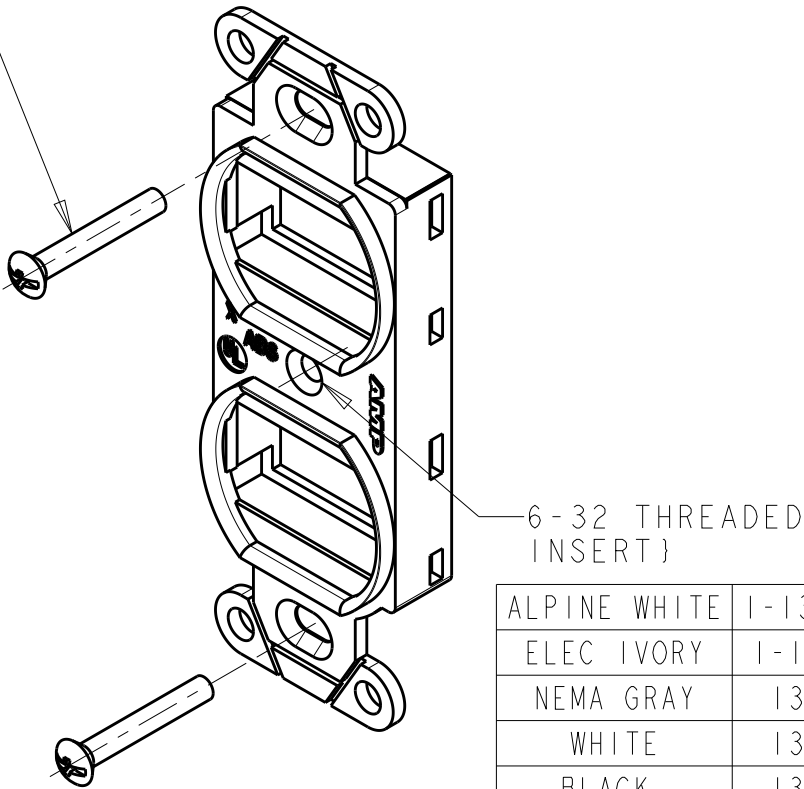
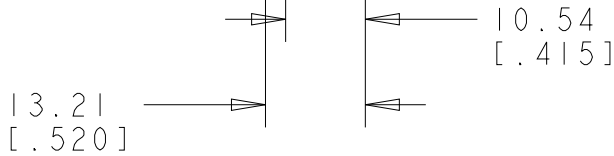
P	LTR	DESCRIPTION	DATE	DWN	APVD
	D	ECO-13-019955	26DEC2013	JM	RA

⚠ MATERIAL:
MOUNTING STRAP: ABS MOLDING
COMPOUND. SEE TABLE FOR COLOR.
SCREWS: ZINC PLATED CARBON STEEL.
THREADED INSERT: BRASS.


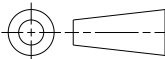
2. THREADED INSERT IS INSTALLED IN
MOUNTING STRAP. OTHERWISE
KIT IS SHIPPED UNASSEMBLED.



SLOTTED FLAT HEAD SELF-TAPPING
SCREW, 6-32 X 22.35 (.88) LONG
QUANTITY 2.



ALPINE WHITE	I-1339120-3
ELEC IVORY	I-1339120-1
NEMA GRAY	I339120-4
WHITE	I339120-3
BLACK	I339120-2
LT ALMOND	I339120-1
COLOR	PART NO.

THIS DRAWING IS A CONTROLLED DOCUMENT.		DWN R. MARTIN 05APR99	<div> TE Connectivity</div>						
		CHK R. MARTIN 05APR99							
DIMENSIONS: MM[INCHES]	TOLERANCES UNLESS OTHERWISE SPECIFIED:	APVD -	NAME - KIT, 4 PORT DUPLEX STRAP -						
	0 PLC ±-	PRODUCT SPEC							
	1 PLC ±-	-							
	2 PLC ±0.25 [.01]	APPLICATION SPEC							
	3 PLC ±-	-	SIZE			CAGE CODE	DRAWING NO	RESTRICTED TO	
	4 PLC ±-		A3			-	C-1339120	-	
	ANGLES ±-	WEIGHT -	CUSTOMER DRAWING						
MATERIAL - -	FINISH - -		SCALE 1:1			SHEET 1		OF 1	REV D

Mouser Electronics

Authorized Distributor

Click to View Pricing, Inventory, Delivery & Lifecycle Information:

[TE Connectivity:](#)

[1-1339120-1](#)