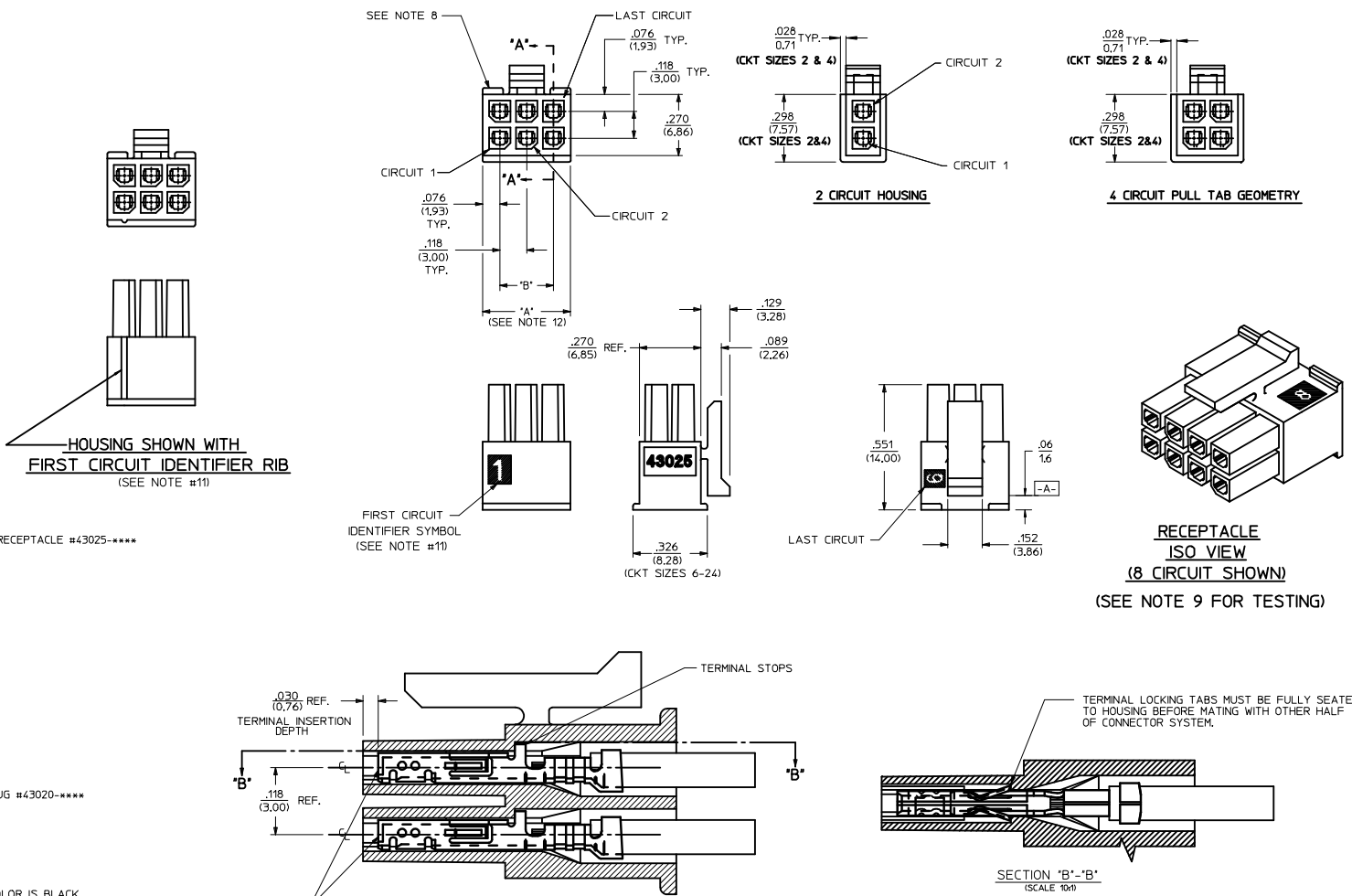


PART CHARACTERISTICS		CKT. NO.	DIM. 'A'	DIM. 'B'
NUMBER OF POSITION	ASSEMBLY ITEM NUMBER			
		2	.152(3.86)	N/A
02	43025-0208	4	.270(6.85)	.118(3.00)
04	43025-0408	6	.388(9.85)	.236(6.00)
06	43025-0608	8	.506(12.85)	.354(9.00)
08	43025-0808	10	.624(15.85)	.472(12.00)
10	43025-1008	12	.742(18.85)	.591(15.00)
12	43025-1208	14	.860(21.85)	.709(18.00)
14	43025-1408	16	.978(24.85)	.827(21.00)
16	43025-1608	18	1.096(27.85)	.945(24.00)
18	43025-1808	20	1.215(30.85)	1.063(27.00)
20	43025-2008	22	1.333(33.85)	1.181(30.00)
22	43025-2208	24	1.451(36.85)	1.299(33.00)
24	43025-2408			



- NOTES:**
- HOUSING MATERIAL: UNFILLED NYLON, RATED UL, 94V-0, IEC 60335-1, 4TH EDITION GLOW WIRE CAPABLE. COLOR IS BLACK.
 - FINISH: N/A
 - PRODUCT SPECIFICATION: PS-43045
 - PACKAGING SPECIFICATION: PK-43025-001
 - THIS RECEPTACLE MATES WITH 43020, 43045.
 - THIS RECEPTACLE TO BE USED WITH MOLEX FEMALE TERMINAL SERIES 43030 OR 46235. SEE SECTION "A"- "A" FOR TERMINAL ORIENTATION IN HOUSING.
 - FOR OVERMOLDING PARAMETERS SEE ENGINEERING SPECIFICATION #SDES-43025-1000.
 - TOP PULL TABS ARE NOT AVAILABLE ON 2 AND 4 CIRCUIT PARTS.
 - MOLEX RECOMMENDS THE USE OF MICRO-FIT TEST PLUG, SERIES NO. 44242-***** WHENEVER TESTING IS PERFORMED. TEST PLUGS MUST NOT BE USED FOR MAKE OR BREAK UNDER LOAD. MOLEX DOES NOT RECOMMEND USING STANDARD MATING COMPONENTS FOR HARNESS TESTING PURPOSES.
 - SOME HOUSINGS MAY HAVE A SMALL GATE BLEMISH NEAR THE GATE THAT DOES NOT AFFECT FUNCTIONALITY.
 - HOUSINGS HAVE EITHER AN IDENTIFIER RIB OR ENGRAVED "1" SYMBOL TO INDICATE CIRCUIT #1. IDENTIFIER TYPE IS TOOL DEPENDENT AND NOT SELECTABLE.
 - DIMENSION "A" MEASURED AT DATUM [A-]
 - THIS PART CONFORMS TO CLASS "B" REQUIREMENTS OF COSMETIC SPECIFICATION PS-45499-002.

ADD NOTE 12 IEC NO: LCP2013-4/30 DFWANWANGWEN CHIKOSUSEK APPROX SMITH 2012/10/12 A6	QUALITY SYMBOLS	GENERAL TOLERANCES (UNLESS SPECIFIED)	DIMENSION STYLE	SCALE	DESIGN UNITS	THIRD ANGLE PROJECTION
	▽=0	4 PLACES ± --- ± ---	IN/MM	---	METRIC	☉
	▽=0	3 PLACES ± --- ± ---	mm	---	METRIC	
	▽=0	2 PLACES ± 0.25 ± 0.14	INCH	---	METRIC	
		1 PLACE ± 0.35 ± ---				
		0 PLACE ± --- ± ---				
		ANGULAR ±1/2°				
		DRAFT WHERE APPLICABLE MUST REMAIN WITHIN DIMENSIONS				
			MATERIAL NO.	DOCUMENT NO.		SHEET NO.
			SEE CHART	SD-43025-001		1 OF 1
			THIS DRAWING CONTAINS INFORMATION THAT IS PROPRIETARY TO MOLEX INCORPORATED AND SHOULD NOT BE USED WITHOUT WRITTEN PERMISSION			