

# MICRO SWITCH

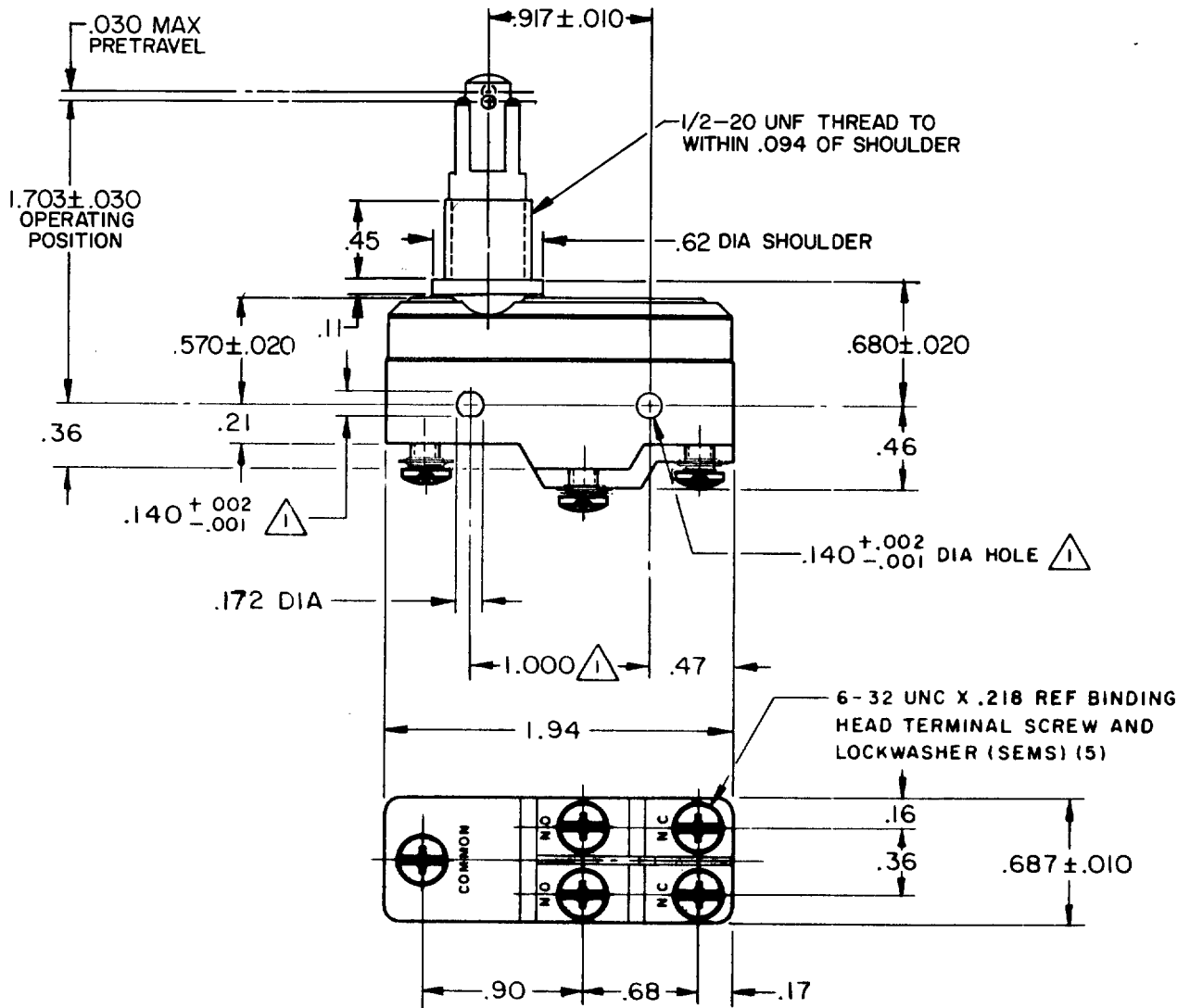
FREEPORT ILLINOIS, U.S.A  
A DIVISION OF HONEYWELL  
FED. MFG. CODE 9 1929

## SWITCH-BASIC

CATALOG LISTING

### BZ-3YQ69T

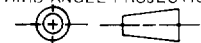
BZ-3YQ69T  
 M  
 DRAWING NUMBER  
 ISSUE 5  
 REVISIONS  
 A C033755  
 K P K  
 31 JUL 74  
 B CO-  
 69351-D  
 JWB  
 18 JUL 91  
 C CO  
 77590  
 SAD  
 11 JUN 94  
 FO-52848-A  
 DRAWN  
 K P K 31 JUL 74  
 CHECK D J W 5 AUG 74  
 CHECK  
 RELEASE NO. CO-8520  
 REPLACES



NOTE -  
 MOUNTING HOLES WILL ACCEPT PINS OR SCREWS OF .139 MAX DIA ON 1.000 ± .002 CENTERS  
 2 - THIS IS A REPLACEMENT TYPE SWITCH. .50 DIA STEEL ROLLER AND OTHER NECESSARY PARTS FURNISHED UNASSEMBLED AS A PACKET

THIS DRAWING COVERS A PROPRIETARY ITEM AND IS THE PROPERTY OF MICRO SWITCH, A DIVISION OF HONEYWELL. THIS DRAWING IS NOT TO BE COPIED OR USED WITHOUT THE APPROVAL OF MICRO SWITCH.

THIRD ANGLE PROJECTION



### CHARACTERISTICS

OPERATING FORCE----- 16-26 OZ  
 RELEASE FORCE----- 4 OZ MIN  
 DIFFERENTIAL TRAVEL----- .001-.004  
 OVERTRAVEL----- .140 MIN

### ELECTRICAL DATA

CONTACT ARRANGEMENT  
 SINGLE POLE - DOUBLE THROW - SPLIT CONTACT

UL LISTED - FILE E12252  
 CODE L4 5A - 250 VAC



SCALE FULL

DO NOT SCALE PRINT

TOLERANCES  
 APPLY TO DESIGN UNITS. CONVERSIONS ARE ONLY FOR REFERENCE. UNLESS NOTED, TOLERANCES ARE ±

DIM.	TOL.	DIM.	TOL.
mm	mm/in	in	mm/in
NO PLACES	X	1/.04	
ONE PLACE	X,X	0.4/.016	X,X 0.8/.03
TWO PLACES	X,XX	0.15/.008	X,XX 0.38/.015
THREE PLACES	X,XXX		X,XXX 0.13/.005
ANGLES			

DESIGN UNITS  SI METRIC  US CUSTOMARY

WEIGHT