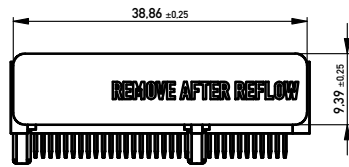
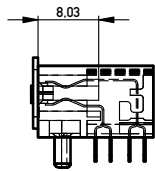


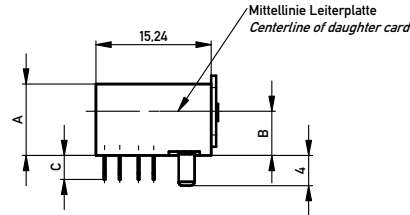
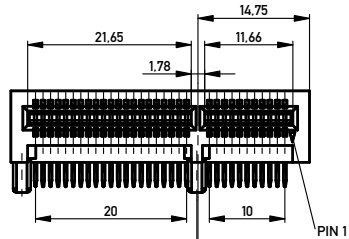
view with dust cover



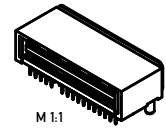
Detail contact area



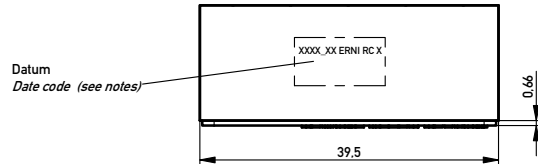
Offset von Führungssteg zu Referenzzapfen  
Offset from guiding bar to reference peg 0.15



Mittellinie Leiterplatte  
Centerline of daughter card



M 1:1



Datum  
Date code (see notes)

**NOTES:**

Material: LCP GF 30 schwarz  
Material: LCP GF 30 black

Galvanik: min. 1.27 µm Unternickelung  
über gesamten PIN - Bereich  
Gold - Flash im Lötbereich

Plating: min. 1.27 µm Ni entire contact  
Gold - Flash plating on contact tails

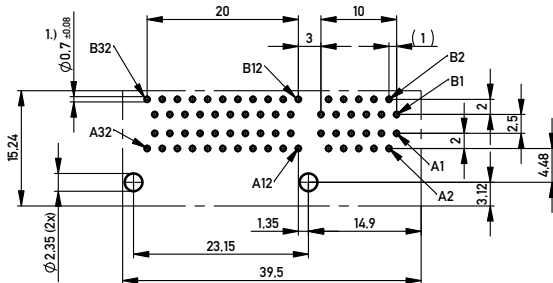
1.) Fertiglochdurchmesser  
finished viadiameter (PTH)

Package: Tray ( 20 pcs.)

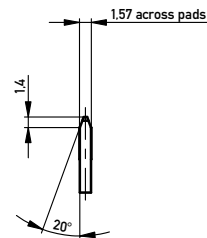
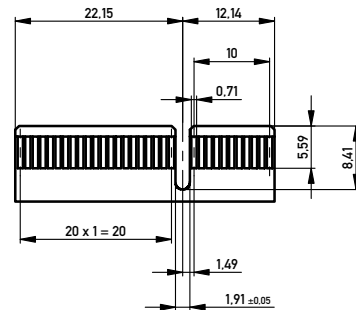
Connector printing / Labeling:  
according to drawing 294775

Resistance	Part No.	Length (mm)	Width (mm)	Height (mm)	Plating
85 Ohm	009804	14,7	11,18	3,18	min. 0.8 µm Au
	009704	14,7	11,18	3,18	min. 0.127 µm Au
	009604	14,7	11,18	2,54	min. 0.8 µm Au
	009504	14,7	11,18	2,54	min. 0.127 µm Au
	009404	9,4	5,84	3,18	min. 0.8 µm Au
	009304	9,4	5,84	3,18	min. 0.127 µm Au
	009204	9,4	5,84	2,54	min. 0.8 µm Au
	009104	9,4	5,84	2,54	min. 0.127 µm Au
	100 Ohm	009065	20,3	16,69	3,18
009064		14,7	11,18	3,18	min. 0.8 µm Au
009063		9,4	5,84	3,18	min. 0.8 µm Au
009045		20,3	16,69	2,54	min. 0.8 µm Au
009044		14,7	11,18	2,54	min. 0.8 µm Au
009043		9,4	5,84	2,54	min. 0.8 µm Au
009025		20,3	16,69	3,18	min. 0.127 µm Au
009024		14,7	11,18	3,18	min. 0.127 µm Au
009023		9,4	5,84	3,18	min. 0.127 µm Au
009005		20,3	16,69	2,54	min. 0.127 µm Au
009004		14,7	11,18	2,54	min. 0.127 µm Au
009003		9,4	5,84	2,54	min. 0.127 µm Au

Lochbild für Leiterplatte (Bestückungsseite)  
Board hole pattern (component mounting side)



daughter card layout



Layout proposal is in accordance with the PCI Express spezifikation

Information / Tolerances: Sollern nicht anders angegeben / unless otherwise notes		Tolerances	Scale 2:1						
<table border="1"> <tr> <td>.x</td> <td>.xx</td> <td>.xxx</td> </tr> <tr> <td>±0</td> <td>±0.127</td> <td>±0.05</td> </tr> </table>		.x	.xx	.xxx	±0	±0.127	±0.05	<p>All Dimensions in mm</p>	
.x	.xx	.xxx							
±0	±0.127	±0.05							
All rights reserved. Only for information. To ensure that this is the latest version of this drawing, please contact one of the ERNI companies before using.		Subject to modification without prior notice. Drawing will not be updated.	Designation <b>Abgew. PCI Express STV 64pol. RT. Angle PCI Express 64 pins</b>						
www.ERNI.com		<b>284627</b>							
g	10.06.2014	Class PCIEXP							
Index	Date								

Copyright by ERNI GmbH  
Proprietary notice pursuant to ISO 16949 to be observed

# Mouser Electronics

Authorized Distributor

Click to View Pricing, Inventory, Delivery & Lifecycle Information:

[ERNI Electronics:](#)

[009043](#)