

5-8 Pin M16 versafast® Receptacles, Rear Mount, PCB Pins

- Female Receptacles
- Locknuts and O-rings Included
- Easy Keyway Orientation
- IEC IP 67 Protection

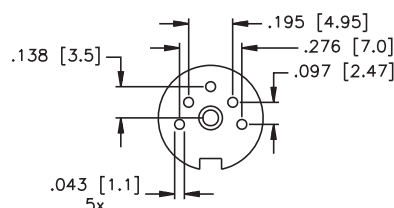


Housing Style	Part Number	Lead Specs.	Application	Pinout
	BKFD 5-PCB	Nickel Plated Brass 5-pin PCB Pins 105°C 60 V, 5 A	M18 x .75 Threads, Mates with 5-pin cordsets	
	BKFD 6-PCB	Nickel Plated Brass 5-pin PCB Pins 105°C 250 V, 5 A	M18 x .75 Threads, Mates with 6-pin cordsets	
	BKFD 7-PCB	Nickel Plated Brass 5-pin PCB Pins 105°C 60 V, 5 A	M18 x .75 Threads, Mates with 7-pin cordsets	
	BKFD 8-PCB	Nickel Plated Brass 5-pin PCB Pins 105°C 60 V, 5 A	M18 x .75 Threads, Mates with 8-pin cordsets	

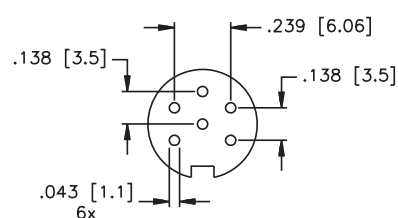
See page G33 for dimensional drawings.

Available with spanner nut as an option (vs. Hex locknut). Add "/S1046" to end of description.

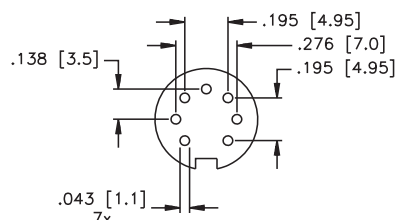
5-Pin PCB Layout



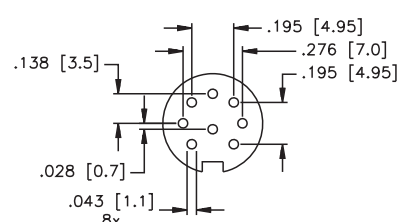
6-Pin PCB Layout



7-Pin PCB Layout

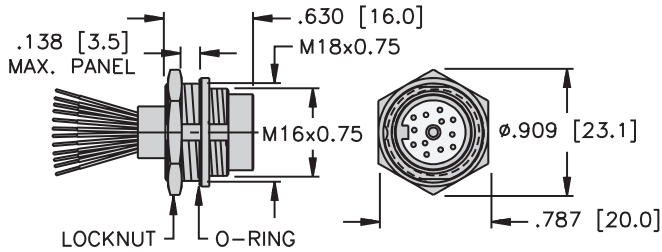


8-Pin PCB Layout



M16 versafast® Receptacles

1

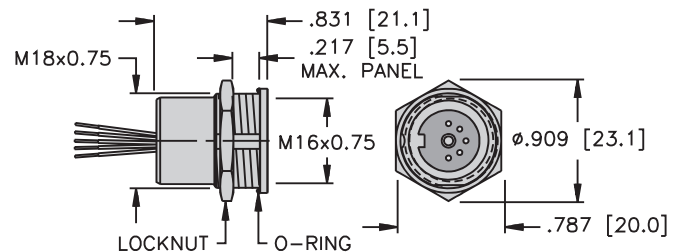


Typical panel cutout is 18 x 17 mm.

BSF .. (5-8, 12-19 pin)

Page G37 - G38

2

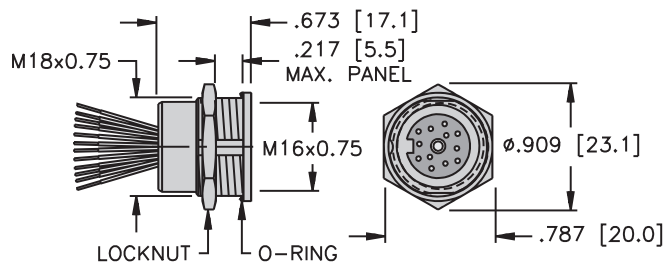


Typical panel cutout is 18 x 17 mm.

BKF .. (5-8 pin)

Page G39

3

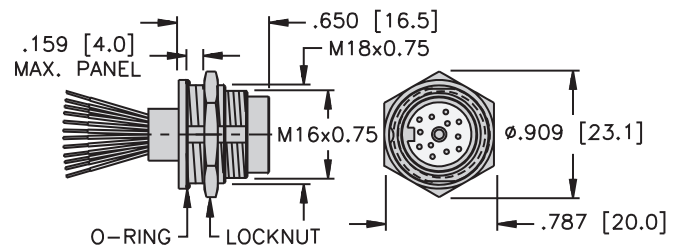


Typical panel cutout is 18 x 17 mm.

BKF .. (12-19 pin)

Page G40

4

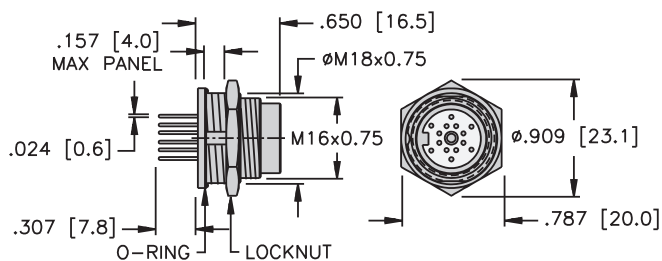


Typical panel cutout is 18 x 17 mm.

BSFD .. (5-8, 12-19 pin)

Page G57 - G58

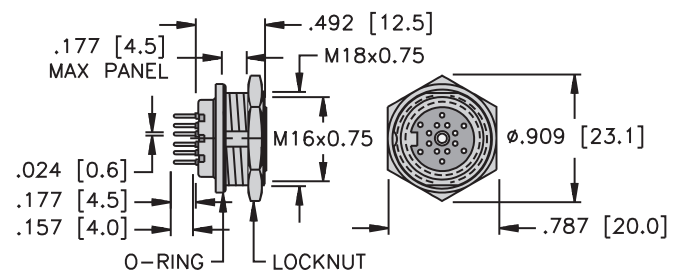
5



BSFD ..PCB (5-8, 12-19 pin)

Page G65 - G66

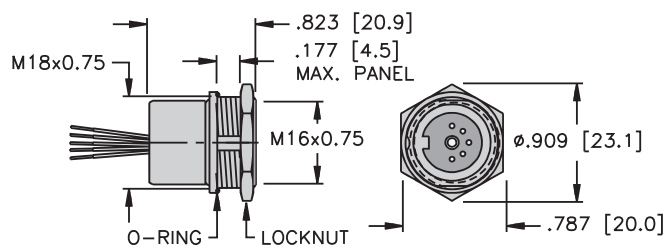
6



BKFD ..PCB (5-8, 12-19 pin)

Page G67 - G68

7

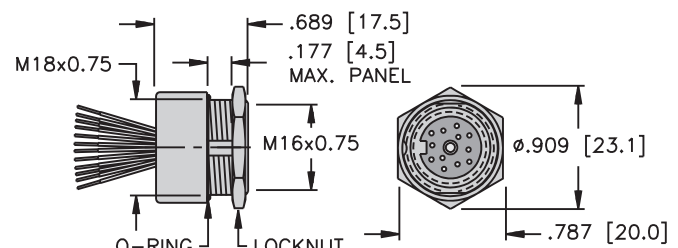


Typical panel cutout is 18 x 17 mm.

BKFD .. (5-8 pin)

Page G59

8



Typical panel cutout is 18 x 17 mm.

BKFD .. (12-19 pin)

Page G60