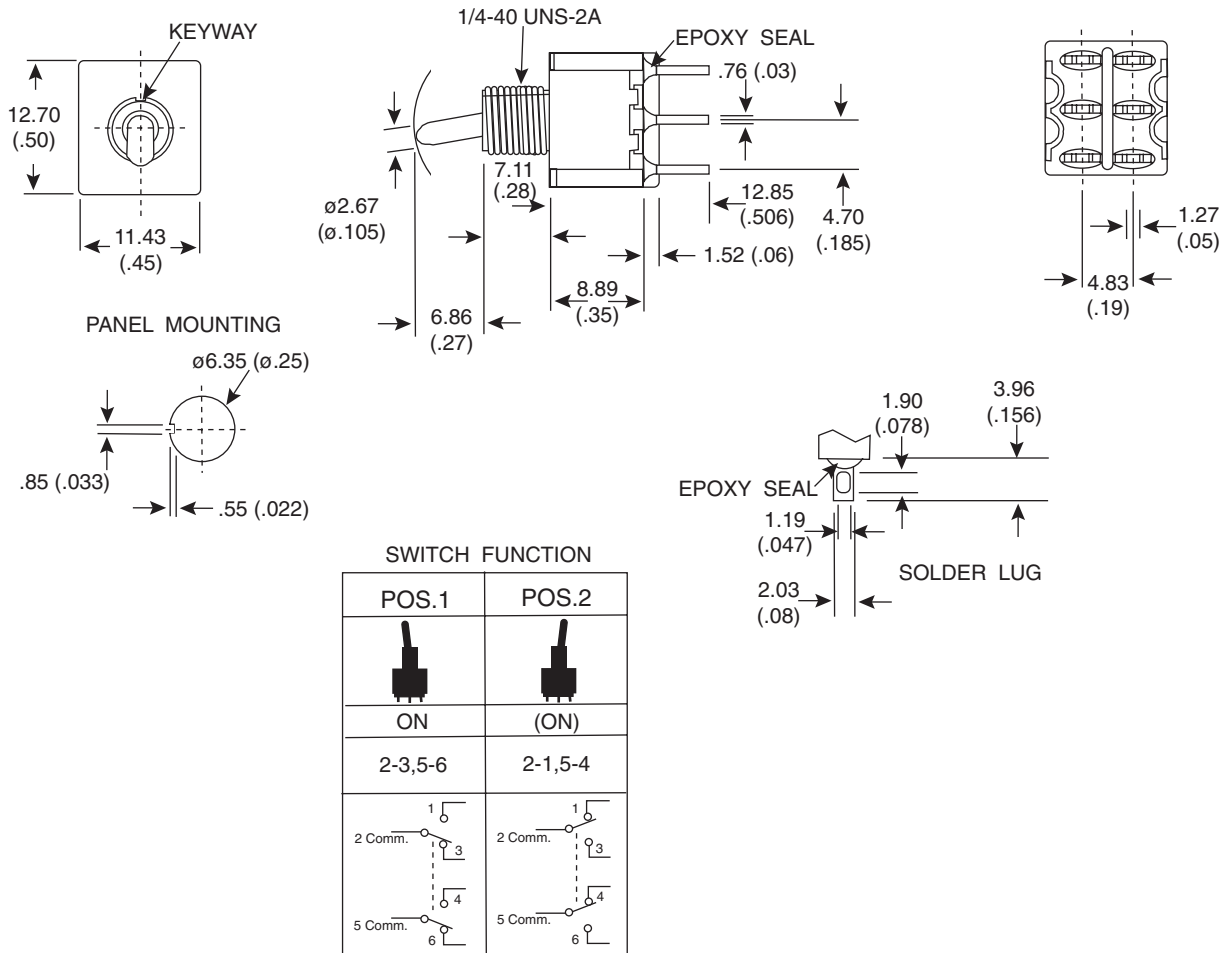


DIMENSIONS: mm (in.)**Electrical Specifications:**

- Contact Resistance: 10mΩ max. initial @ 2-4VDC 100mA
- Insulation Resistance: 1,000MΩ min.
- Dielectric Strength: 1,000 V RMS @ sea level
- Rating: 2A / 250 VAC
5A / 120 VAC or 28 VDC

Mechanical Specifications:

- Operating Temperature: -30° C to +85° C

Materials:

- Case: Diallyl phthalate (DAP)
- Acuator: Brass, chrome plated
- Bushing: Brass, nickel plated
- Housing: Stainless steel
- Terminal/Contact: Silver plated

Note:

- RoHS compliant by exemption

Toggle Switch
108-1MD2T2B3M1QE-EVX

**Mountain
Switch**

Mouser Electronics

Authorized Distributor

Click to View Pricing, Inventory, Delivery & Lifecycle Information:

Mountain Switch:

[108-1MD2T2B3M1QE-EVX](#)