



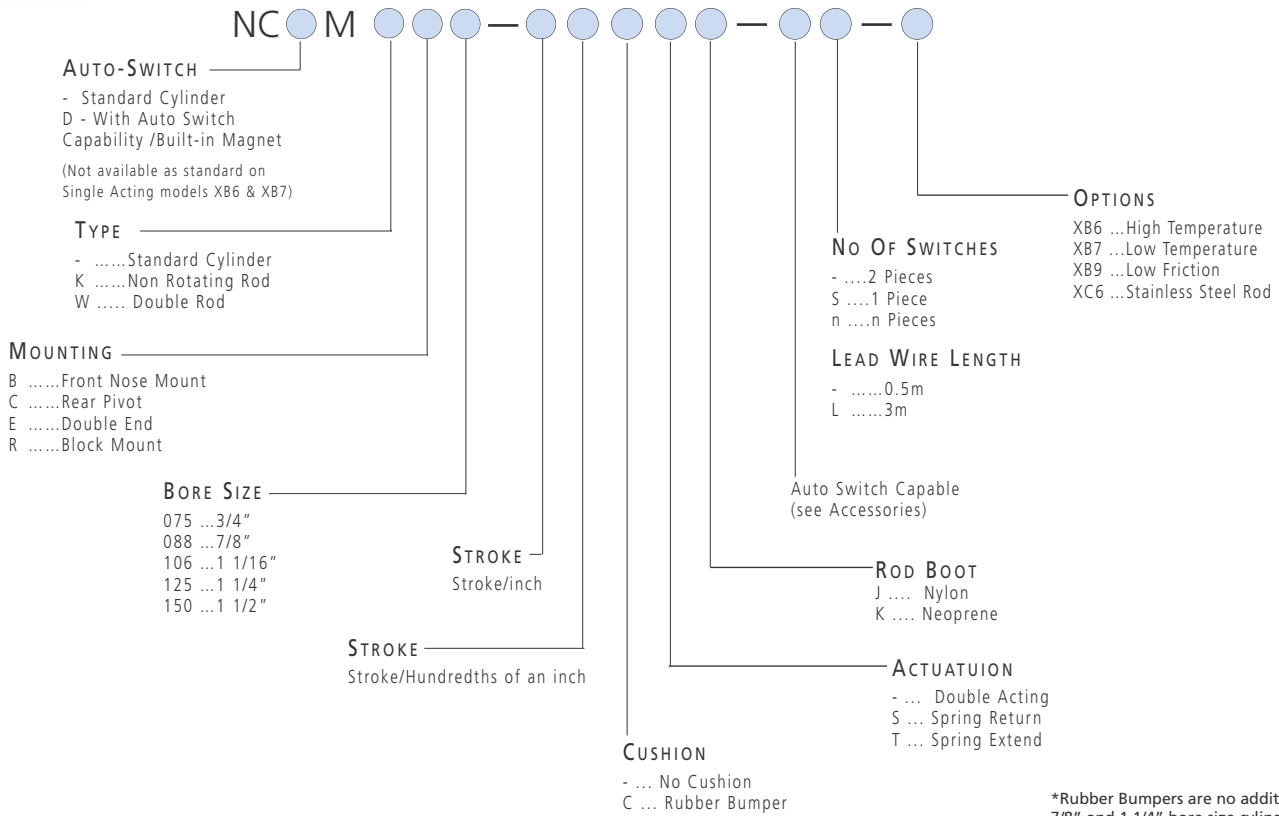
AIR CYLINDER SERIES NCM STAINLESS STEEL CYLINDERS



- ✓ Double Acting
- ✓ Single Acting / Spring Return / Extended
- ✓ Non-Rotate Option Available
- ✓ Double Rod
- ✓ Magnetic Piston for Auto Switch sensing as an option
- ✓ Polished Stainless Steel Tubes
- ✓ Clear Anodized Aluminum Head Covers
- ✓ All Stainless Steel Version Available

HOW TO ORDER

AIR CYLINDER SERIES NCM



*Rubber Bumpers are no additional cost on 7/8" and 1 1/4" bore size cylinders. They are options on the other bore sizes. The 'C' after the stroke must be included

DIMENSIONS SERIES NCM

*Rubber Bumper change in overall length

MODEL	BORE	075	088	106	125	150
NCMB						
NCMC		NO CHANGE	STANDARD	0.125	STANDARD	0.125
NCME						
NCMW		NO CHANGE	STANDARD	0.125	STANDARD	0.125
NCDMW		NO CHANGE	STANDARD	0.500	STANDARD	0.125

Note: When ordered without Rubber Bumper, overall length decreases 0.25 inch

ACCESSORIES

AUTO SWITCHES SERIES NCM

Note: Pre-wired Switches with 3/4 Pin Connectors available, please consult SMC Customer Service

AUTO SWITCHES			
MODEL NUMBER	OPERATING VOLTAGE	MAXIMUM CURRENT OR OPERATING CURRENT RANGE (mA)	INDICATOR LIGHT /WIRE
D-B54	24VDC 110VAC 220VAC	5~50mA 5~25mA 5~12.5mA	Yes/Reed/2
D-B53	24VDC	5~50mA	Yes/Reed/2
D-B64	24VDC 110VAC 220VAC	50mA 25mA 12.5mA	Yes/Reed/2
D-C73	24VAC 110VAC	5~40mA 5~20mA	Yes/Reed/2
D-G59 D-H7A1 D-K59	28VDC or less 24V (10~20VDC)	40mA 5~150mA	Yes/Solid State 3 Wire NPN Solid State 2 Wire

ACCESSORIES

AUTO SWITCH MOUNTING BAND SERIES NCM

AUTO SWITCH TYPE	075	088	BORE SIZE 106	125	150
D-G59					
D-B54					
D-B64	NBA-075	NBA-088	NBA-106	NBA-125	NBA-150
D-K59					
D-B53					
D-C73	NBM2-075	NBM2-088	NBM2-106	NBM2-125	NBM2-150
D-H7A1					

TECHNICAL SPECIFICATIONS

STAINLESS STEEL CYLINDER SERIES NCM

Bore Size (inch)	075 (3/4")	088 (7/8")	106 (1 1/6")	125 (1 1/4")	150 (1 1/2")
Fluid	Air				
Max Operating Pressure	1.75MPa / 250 PSI				
Min Operating Pressure	0.06MPa / 8 PSI				
Ambient and Fluid Temp	5~60°C / 40~140°F				
Piston Speed	No Cushion: 2~20 in/sec ; Rubber Cushion: 2~30 in/sec				
Bumper	Optional	Urethane	Optional	Urethane	Optional
Lubrication	Not required (Pre-lubricated at Factory)				
Double Acting Cylinder	Single Rod / Double Rod				

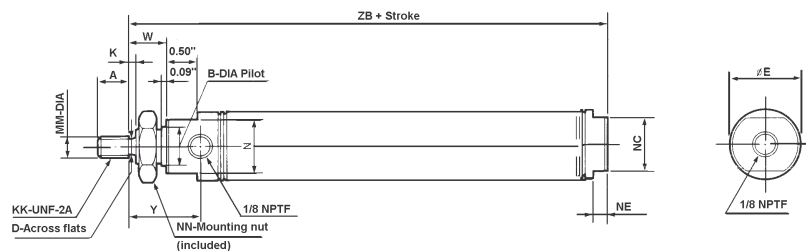
TECHNICAL SPECIFICATIONS

STANDARD STROKE LIST SERIES NCM

MOUNTING	STANDARD STROKE (INCH)	MAXIMUM STROKE
Front Nose Mounting	1/2, 1, 2, 3, 4, 5, 6	12
Double End Mounting	1/2, 1, 2, 3, 4, 5, 6,	32
Rear End Mounting	7, 8, 10, 12	
Double Rod	1/2, 1, 2, 3, 4, 5, 6	12

DIMENSIONS

DOUBLE ACTING / SINGLE ROD SERIES NCM FRONT NOSE MOUNTING NC(D)MB



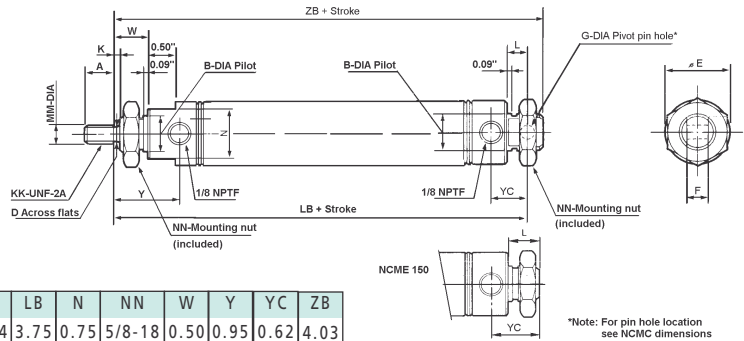
Bore (Inch)	MM	KK	A	B	D	E	K	N	NC	NE	NN	W	Y	ZB
075 (3/4")	0.250	1/4-28	0.50	0.624	-	0.86	-	0.75	0.62	0.12	5/8-18	0.50	0.95	2.97
088 (7/8")	0.250	1/4-28	0.50	0.624	-	0.93	-	0.75	0.75	0.18	5/8-18	0.50	0.95	2.94
106 (1 1/16")	0.312	5/16-24	0.50	0.624	0.25	1.12	0.12	0.88	0.88	0.24	5/8-18	0.62	1.17	3.25
125 (1 1/4")	0.437	7/16-20	0.75	0.749	0.38	1.32	0.25	1.06	1.06	0.25	3/4-16	0.88	1.62	4.00
150 (1 1/2")	0.437	7/16-20	0.75	0.749	0.38	1.56	0.25	1.25	1.25	0.25	3/4-16	0.88	1.50	3.69

SEE INSIDE FRONT COVER FOR
DETAILS OF YOUR LOCAL SALES OFFICE



DIMENSIONS

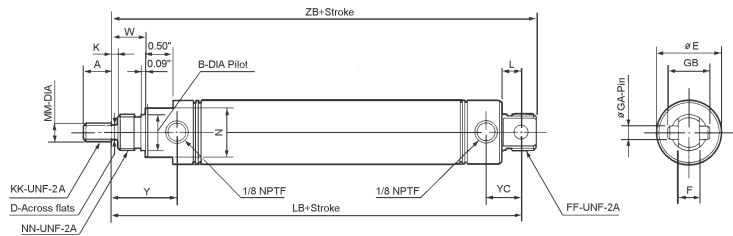
DOUBLE ACTING / SINGLE ROD **SERIES NCM**
DOUBLE END MOUNTING NC(D)ME



Bore (Inch)	MM	KK	A	B	D	E	F	G	K	L	LB	N	NN	W	Y	YC	ZB
075 (3/4")	0.250	1/4-28	0.50	0.624	-	0.86	0.38	0.251	-	0.34	3.75	0.75	5/8-18	0.50	0.95	0.62	4.03
088 (7/8")	0.250	1/4-28	0.50	0.624	-	0.93	0.38	0.251	-	0.34	3.56	0.75	5/8-18	0.50	0.95	0.62	3.84
106 (1 1/16")	0.312	5/16-24	0.50	0.624	0.25	1.12	0.38	0.251	0.12	0.34	3.84	0.88	5/8-18	0.62	1.17	0.62	4.12
125 (1 1/4")	0.437	7/16-20	0.75	0.749	0.38	1.32	0.50	0.251	0.25	0.41	4.72	1.06	3/4-16	0.88	1.62	0.78	5.12
150 (1 1/2")	0.437	7/16-20	0.75	0.749	0.38	1.56	-	-	0.25	0.63	-	1.25	3/4-16	0.88	1.50	0.91	4.75

DIMENSIONS

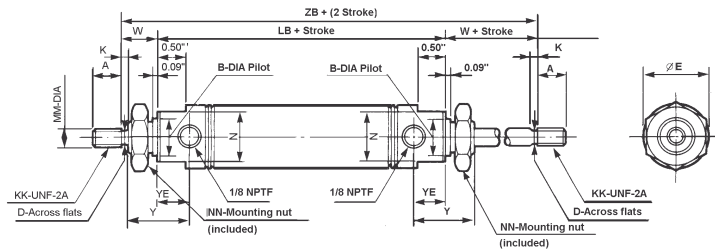
DOUBLE ACTING / SINGLE ROD **SERIES NCM**
REAR PIVOT MOUNTING NC(D)MC



Bore (Inch)	MM	KK	A	B	D	E	F	FF	GA	GB	K	L	LB	N	NN	W	Y	YC	ZB
075 (3/4")	0.250	1/4-28	0.50	0.624	-	0.86	0.38	5/8-18	0.250	0.75	-	0.34	3.75	0.75	5/8-18	0.50	0.95	0.62	4.03
088 (7/8")	0.250	1/4-28	0.50	0.624	-	0.93	0.38	5/8-18	0.250	0.75	-	0.34	3.56	0.75	5/8-18	0.50	0.95	0.62	3.84
106 (1 1/16")	0.312	5/16-24	0.50	0.624	0.25	1.12	0.38	5/8-18	0.250	0.75	0.12	0.34	3.84	0.88	5/8-18	0.62	1.17	0.62	4.12
125 (1 1/4")	0.437	7/16-20	0.75	0.749	0.38	1.32	0.50	5/8-18	0.250	0.75	0.25	0.41	4.72	1.06	3/4-16	0.88	1.62	0.78	5.12
150 (1 1/2")	0.437	7/16-20	0.75	0.749	0.38	1.56	0.62	-	0.375	1.00	0.25	0.50	4.38	1.25	3/4-16	0.88	1.50	0.78	4.75

DIMENSIONS

DOUBLE ACTING / DOUBLE ROD **SERIES NCM**



Bore (Inch)	MM	KK	A	B	D	E	K	LB	N	NN	W	Y	YE	ZB
075 (3/4")	0.250	1/4-28	0.50	0.624	-	0.86	-	3.00	0.75	5/8-18	0.50	0.95	0.45	4.00
088 (7/8")	0.250	1/4-28	0.50	0.624	-	0.93	-	2.91	0.75	5/8-18	0.50	0.95	0.45	3.91
106 (1 1/16")	0.312	5/16-24	0.50	0.624	0.25	1.12	0.12	2.75	0.88	5/8-18	0.62	1.05	0.55	4.00
125 (1 1/4")	0.437	7/16-20	0.75	0.749	0.38	1.32	0.25	3.81	1.06	3/4-16	0.88	1.37	0.74	5.56
150 (1 1/2")	0.437	7/16-20	0.75	0.749	0.38	1.56	0.25	3.38	1.25	3/4-16	0.88	1.25	0.62	5.12

TECHNICAL SPECIFICATIONS

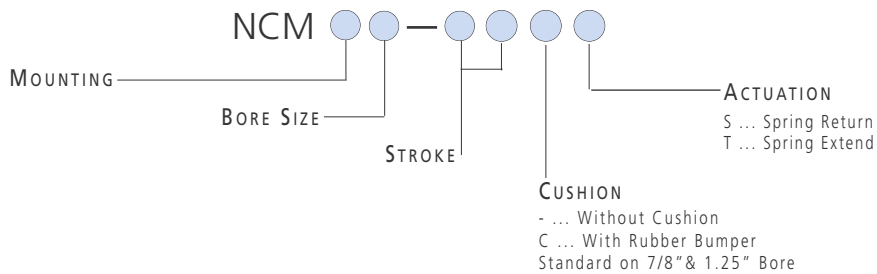
SINGLE ACTING - SPRING RETURN / SPRING EXTEND SERIES NCM

Bore Size (inch)	075 (3/4")	088 (7/8")	106 (1 1/6")	125 (1 1/4")	150 (1 1/2")
Fluid	Air				
Max Operating Pressure	1.75MPa / 250 PSI				
Min Operating Pressure	0.18MPa / 25 PSI				
Ambient and Fluid Temp	5~60°C / 40~140°F				
Piston Speed	50~500mm/s / 2~20 in/sec				
Bumper	Optional	Urethane (Std)	Optional	Urethane (Std)	Optional
Lubrication	Not required (Pre-lubricated at Factory)				
Stroke (inch)	1/2, 1, 1 1/2, 2, 3, 4 (Max 6)				

HOW TO ORDER

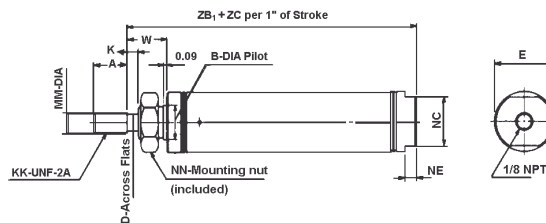
AIR CYLINDER SERIES NCM

SINGLE ACTING - SPRING RETURN / SPRING EXTEND



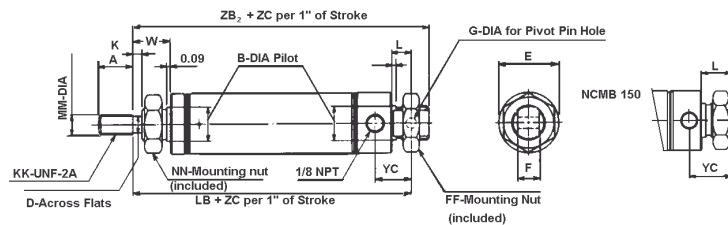
DIMENSIONS

FRONT NOSE MOUNTING / SPRING RETURN NCMB_ _S

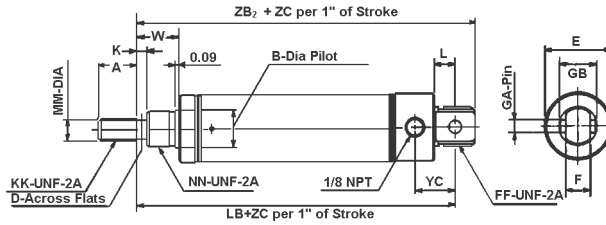


DIMENSIONS

DOUBLE END MOUNTING / SPRING RETURN NCME_ _S

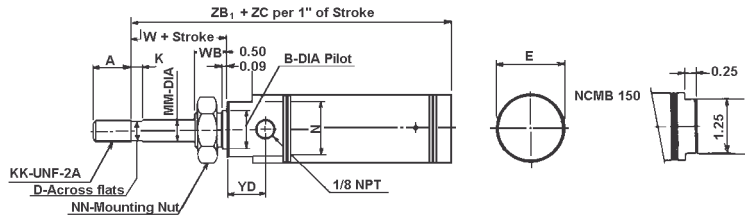


DIMENSIONS
REAR PIVOT MOUNTING / SPRING RETURN NCMC_-_S

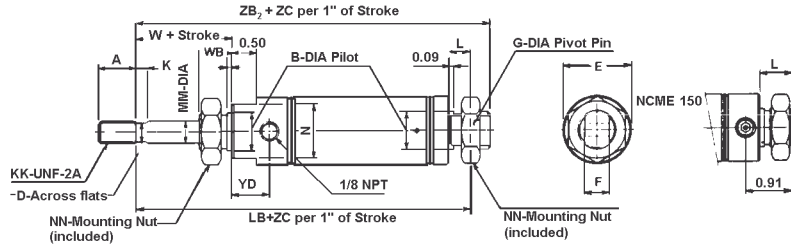


Bore (Inch)	MM	KK	A	B	D	E	F	FF	G	GA	GB	K	L	LB	NC	NE	NN	W	YC	ZB ₁	ZB ₂	ZB
075 (3/4")	0.250	1/4-28	0.50	0.496	-	0.86	0.38	5/8-18	0.251	0.250	0.75	-	0.34	2.28	0.62	0.12	1/2-20	0.44	0.62	1.50	2.56	1.69
088 (7/8")	0.250	1/4-28	0.50	0.624	-	0.93	0.38	5/8-18	0.251	0.250	0.75	-	0.34	2.47	0.75	0.18	5/8-18	0.50	0.62	1.84	2.75	1.56
106 (1 1/16")	0.312	5/16-24	0.50	0.624	0.25	1.12	0.38	5/8-18	0.251	0.250	0.75	0.12	0.34	2.66	0.88	0.24	5/8-18	0.62	0.62	2.06	2.94	1.56
125 (1 1/4")	0.437	7/16-20	0.75	0.749	0.38	1.32	0.50	3/4-16	0.251	0.250	0.75	0.25	0.41	3.38	1.06	0.25	3/4-16	0.88	0.78	2.66	3.78	1.81
150 (1 1/2")	0.437	7/16-20	0.75	0.749	0.38	1.56	0.62	-	-	0.375	1.00	0.25	0.50	3.12	1.25	0.25	3/4-16	0.88	0.78	2.44	3.50	1.69

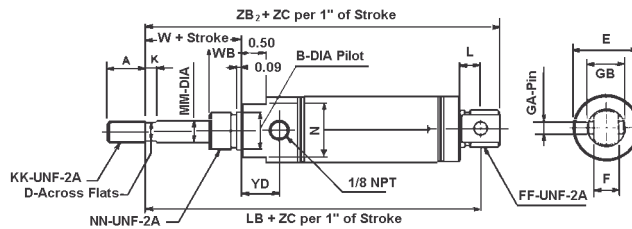
DIMENSIONS
FRONT NOSE MOUNTING / SPRING EXTEND NCMB_-_T



DIMENSIONS
DOUBLE END MOUNTING / SPRING EXTEND NCME_-_T



DIMENSIONS
REAR PIVOT MOUNTING / SPRING EXTEND NCMC_-_T



Bore (Inch)	MM	KK	A	B	D	E	F	FF	G	GA	GB	K	L	LB	N	NN	W	WB	YD	ZB ₁	ZB ₂	ZC
075 (3/4")	0.250	1/4-28	0.50	0.624	-	0.86	0.38	5/8-18	0.251	0.250	0.75	-	0.34	2.44	0.75	5/8-18	0.50	0.50	0.45	2.10	2.72	2.69
088 (7/8")	0.250	1/4-28	0.50	0.624	-	0.93	0.38	5/8-18	0.251	0.250	0.75	-	0.34	2.62	0.75	5/8-18	0.50	0.50	0.45	2.27	2.91	2.56
106 (1 1/16")	0.312	5/16-24	0.50	0.624	0.25	1.12	0.38	5/8-18	0.251	0.250	0.75	0.12	0.34	2.78	0.88	5/8-18	0.62	0.50	0.55	2.42	3.06	2.81
125 (1 1/4")	0.437	7/16-20	0.75	0.749	0.38	1.32	0.50	3/4-16	0.251	0.250	0.75	0.25	0.41	3.76	1.06	3/4-16	0.88	0.62	0.75	3.34	4.16	2.81
150 (1 1/2")	0.437	7/16-20	0.75	0.749	0.38	1.56	0.62	-	-	0.375	1.00	0.25	0.50	3.88	1.25	3/4-16	0.88	0.62	0.63	3.16	4.26	3.00

TECHNICAL SPECIFICATIONS

BLOCK TYPE MOUNT CYLINDER SERIES NCM

Bore Size (inch)	3/4" ; 1 1/16" ; 1 1/2"
Fluid	Air
Max Operating Pressure	1.75MPa / 250 PSI
Min Operating Pressure	Double Acting: 0.06MPa / 8 PSI Single Acting: 0.18MPa / 25 PSI
Ambient and Fluid Temp	5~60°C / 40~140°F
Piston Speed	50~500mm/s / 2 ~20 in/sec
Cushion	None

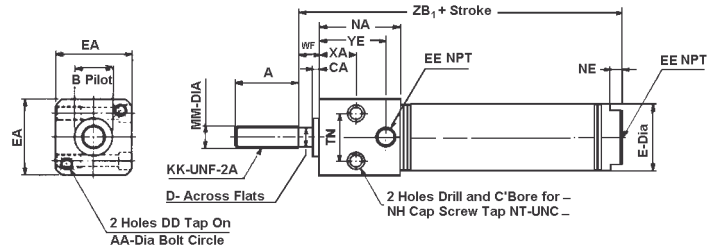
TECHNICAL SPECIFICATIONS

STANDARD STROKE LIST SERIES NCM

Type	Standard Stroke (inch)	Max Stroke
Double Acting	1/2, 1, 1 1/2, 2, 3, 4, 5, 6	12
Single Acting	1/2, 1, 1 1/2, 2, 3, 4	6

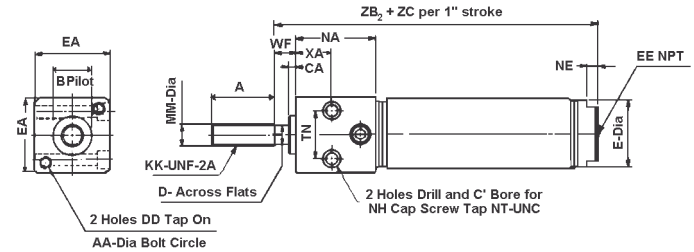
DIMENSIONS

DOUBLE ACTING NC(D)MR



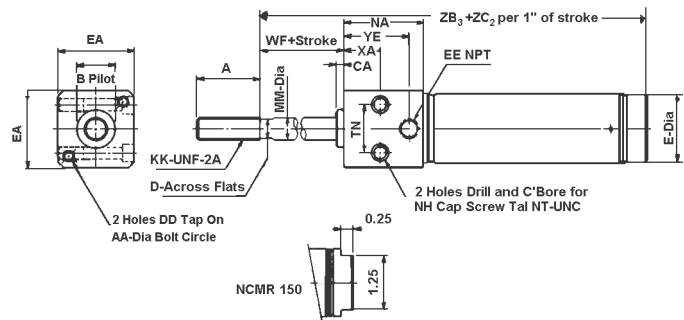
DIMENSIONS

SINGLE ACTING / SPRING RETURN NC(D)MR_-_S



DIMENSIONS

SINGLE ACTING / SPRING EXTEND NC(D)MR_-_T



Bore (Inch)	MM	KK	A	AA	B	CA	D	DD	E	EA	EE	NA	NE	NH	NT	TN	WF	YE	XA	ZB ₁	ZB ₂	ZB ₃	ZC ₁	ZC ₂
075 (3/4")	0.250	1/4-28	0.75	1.00	0.625	0.093	0.22	10-32 UNF	0.81	1.00	1/8	1.12	0.12	10-32 UNF	1/4-20	0.62	0.34	0.88	0.38	3.22	2.66	2.35	1.69	2.69
106 (1 1/16")	0.312	5/16-24	0.75	1.25	0.750	0.093	0.25	10-32 UNF	1.12	1.25	1/8	1.47	0.24	10-32 UNF	1/4-20	0.81	0.47	1.22	0.62	3.75	3.38	2.93	1.81	2.81
150 (1 1/2")	0.437	7/16-20	1.25	1.75	1.000	0.125	0.38	1/4-20 UNF	1.56	1.75	1/4	1.93	0.25	1/4-20 UNC	5/16-18	1.12	0.38	1.57	0.88	4.19	3.69	3.69	2.00	3.00

SEE INSIDE FRONT COVER FOR
DETAILS OF YOUR LOCAL SALES OFFICE



TECHNICAL SPECIFICATIONS

NON-ROTATING ROD CYLINDER SERIES NCM

Bore Size (inch)	3/4"	7/8"	1 1/16"	1 1/4"	1 1/2"
Fluid	Air				
Max Operating Pressure	1.75MPa / 250 PSI				
Min Operating Pressure	0.06MPa / 8 PSI				
Ambient and Fluid Temp	5-60°C / 40-140°F				
Piston Speed	50-500mm/s / 2-20 in/sec				
Rod Material	SUS303				
Cushion	None	Urethane(Std)	None	Urethane (Std)	None

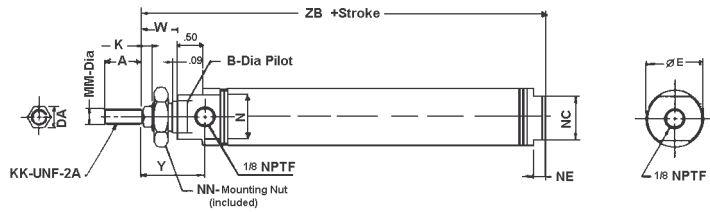
TECHNICAL SPECIFICATIONS

STANDARD STROKE LIST SERIES NCM

Type	Standard Stroke (inch)	Max Stroke
Front Nose	1/2, 1, 1 1/2, 2, 3, 5, 6	6
Double End	1/2, 1, 1 1/2, 2, 3, 4,	12
Rear Pivot	5, 6, 8, 10, 12	

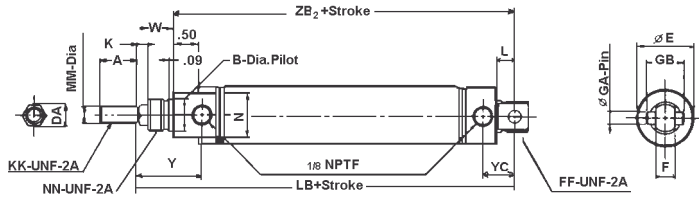
DIMENSIONS

FRONT NOSE MOUNTING NC(D)MKB



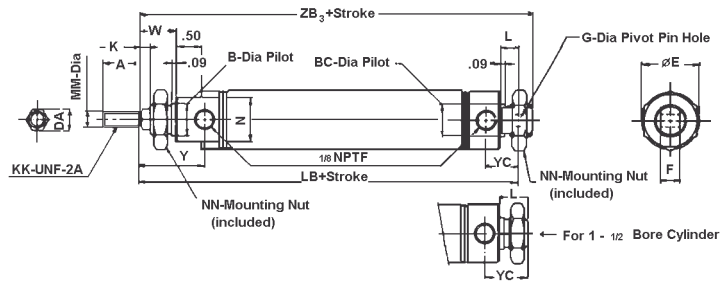
DIMENSIONS

REAR PIVOT MOUNTING NC(D)MKC



DIMENSIONS

DOUBLE END MOUNTING NC(D)MKE



Bore (Inch)	MM	KK	A	B	BC	DA	E	F	FF	G	GA	GB	K	L	LB	N	NC	NE	NN	W	Y	YC	ZB ₁	ZB ₂	ZB ₃
075 (3/4")	0.250	1/4-28	0.50	0.624	0.624	0.25	0.86	0.38	5/8-18	.251	.250	.75	0.25	0.34	4	0.75	0.62	0.12	5/8-18	0.75	1.20	0.62	3.22	4.28	4.28
088 (7/8")	0.250	1/4-28	0.50	0.624	0.624	0.25	0.93	0.38	5/8-18	.251	.250	.75	0.25	0.34	3.55	0.75	0.75	0.18	5/8-18	0.75	1.20	0.62	3.19	3.83	3.83
106 (1 1/16")	0.312	5/16-24	0.50	0.624	0.624	0.38	1.12	0.38	5/8-18	.251	.250	.75	0.25	0.34	3.97	0.88	0.88	0.24	5/8-18	0.75	1.30	0.62	3.38	4.25	4.25
125 (1 1/4")	0.375	3/8-24	0.88	0.749	0.749	0.44	1.32	0.50	-	.251	-	-	0.25	0.41	4.46	1.06	1.06	0.25	3/4-16	0.88	1.62	0.78	4.00	5.06	5.06
150 (1 1/2")	0.375	3/8-24	0.88	0.874	0.749	0.44	1.56	-	-	-	.375	1	0.38	0.63	-	1.25	1.25	0.25	7/8-14	1.12	1.81	0.91	4.00	-	4.81

TECHNICAL SPECIFICATIONS
SERIES NCM

LOW TEMPERATURE - XB7 OPTION

Bore Size (inch)	075 (3/4")	088 (7/8")	106 (1 1/6")	125 (1 1/4")	150 (1 1/2")
Fluid	Air				
Max Operating Pressure	1.75MPa / 250 PSI				
Min Operating Pressure	0.06MPa / 8 PSI				
Ambient and Fluid Temp	-30~70°C / -22~158°F				
Piston Speed	50~500mm/s / 2~20 in/sec				
Cushion	None				
Action	Double Acting				
Auto Switch Capable	No				

TECHNICAL SPECIFICATIONS
SERIES NCM

LOW FRICTION / SPEED - XB9 OPTION

Bore Size (inch)	075 (3/4")	088 (7/8")	106 (1 1/6")	125 (1 1/4")	150 (1 1/2")
Fluid	Air				
Max Operating Pressure	1.75MPa / 250 PSI				
Min Operating Pressure	0.06MPa / 8 PSI				
Ambient and Fluid Temp	5~60°C / 40~140°F				
Piston Speed	50~500mm/s / 2~20 in/sec				
Cushion	None	Urethane	None	Urethane	None
Action	Double Acting				
Rod Material	SUS304				
Auto Switch Capable	Yes				

TECHNICAL SPECIFICATIONS
SERIES NCM

STAINLESS STEEL ROD - XC6 OPTION

Bore Size (inch)	1 1/16"	1 1/4"	1 1/2"
Fluid	Air		
Max Operating Pressure	1.75MPa / 250 PSI		
Min Operating Pressure	0.06MPa / 8 PSI		
Ambient and Fluid Temp	-23~74°C / -10~165°F		
Piston Speed	50~500mm/s / 2~20 in/sec		
Cushion	None	Urethane	None
Rod Material	SUS304		
Auto Switch Capable	Yes		

ACCESSORIES
SERIES NCM

PIVOT BRACKET (REAR PIVOT) NCMC

Part No	Applicable Bore	A	B	C	D	E	F	G	H	J	K	L	M	N	øP
NCM-PC075	3/4"; 7/8"; 1 1/16"; 1 1/4"	0.75	0.18	0.27	0.27	0.44	0.79	0.44	0.79	1.10	0.12	0.88	1.18	0.31	0.255
NCM-PC150	1 1/2"	1	0.25	0.27	0.27	0.62	0.98	0.62	0.98	1.50	0.12	1.38	1.75	0.38	0.38

ACCESSORIES
SERIES NCM

PIVOT BRACKET (END MOUNT) NCME

Part No	Applicable Bore	A	B	C	D	øE	F	G	H	J	K	L	M	N
NCM-PE075	3/4"; 7/8"; 1 1/16"	1.25	1.95	0.35	0.38	0.27	0.25	0.12	1.18	0.88	0.75	1.10	0.18	0.31
NCM-PE125	1 1/4"; 1 1/2"	1.38	2.08	0.35	0.50	0.27	0.25	0.12	1.18	0.88	0.75	1.10	0.18	0.31

TECHNICAL SPECIFICATIONS

STANDARD STROKE LIST SERIES NCM

Mounting	Standard Stroke (inch)	Maximum Stroke
Front Nose	1/2, 1, 1 1/2, 2, 3, 4, 5, 6	6
Double End Rear Pivot	1/2, 1, 1 1/2, 2, 3, 5, 6, 8, 10, 12	12

TECHNICAL SPECIFICATIONS

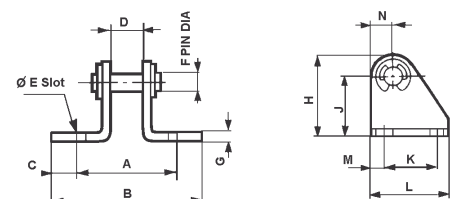
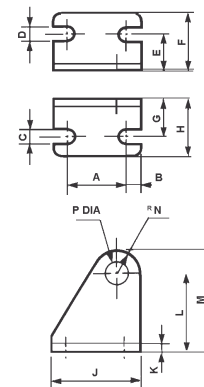
STANDARD STROKE LIST SERIES NCM

Mounting	Standard Stroke (inch)	Maximum Stroke
Front Nose	1/2, 1, 1 1/2, 2, 3, 4, 5, 6	6
Double End Rear Pivot	1/2, 1, 1 1/2, 2, 3, 5, 6, 8, 10, 12	12

TECHNICAL SPECIFICATIONS

STANDARD STROKE LIST SERIES NCM

Mounting	Standard Stroke (inch)
Front Nose	1/2, 1, 1 1/2, 2, 3, 4, 5, 6
Double End Rear Pivot	1/2, 1, 1 1/2, 2, 3, 5, 6, 8, 10, 12

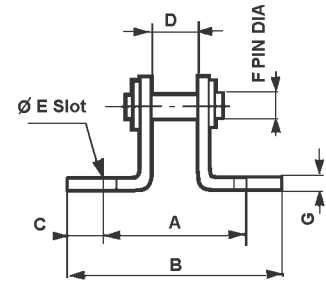


ACCESSORIES

SERIES NCM

PIVOT BRACKET (DOUBLE END) NCME

Part No	Applicable Bore	A	B	C	D	øE	F	G	H	J	K	L	M	N
NCM-PE075	3/4"; 7/8"; 1 1/16"	1.25	1.95	0.35	0.38	0.27	0.25	0.12	1.18	0.88	0.75	1.10	0.18	0.31
NCM-PE150	1 1/4"; 1 1/2"	1.38	2.08	0.35	0.50	0.27	0.25	0.12	1.18	0.88	0.75	1.10	0.18	0.31

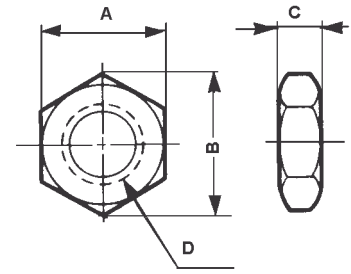


ACCESSORIES

SERIES NCM

MOUNTING NUTS (NOSE MOUNT THREAD)

Part No	Applicable Bore	A	B	C	D
JM-08	3/4"; 7/8"; 1 1/16"	0.94	1.08	0.38	5/8-18 UNF
JM-10	1 1/4"; 1 1/2"	1.12	1.30	0.42	3/4-16 UNF

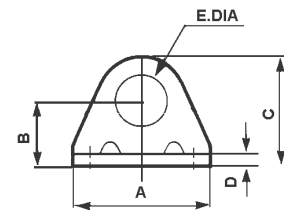
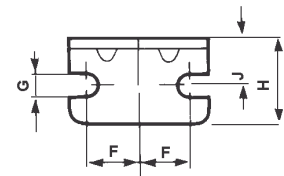


ACCESSORIES

SERIES NCM

FOOT BRACKET

Part No	Applicable Bore	A	B	C	D	E	F	G	H	J
NCM-L075	3/4"; 7/8"; 1 1/16"	1.89	0.81	1.36	0.12	0.63	0.75	0.27	0.98	0.56
NCM-L150	1 1/4"; 1 1/2"	2.52	1.00	1.75	0.12	0.75	0.94	0.27	1.50	0.75
NCM-K150	1 1/4"; 1 1/2"	2.52	1.00	1.75	0.12	0.88	0.94	0.27	1.50	0.75

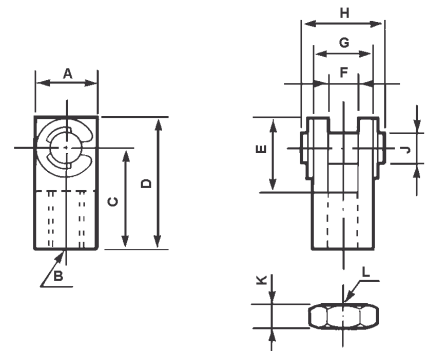


ACCESSORIES

SERIES NCM

ROD CLEVIS

Part No	Applicable Bore	A	B	C	D	E	F	G	H	J	K	L
NY-075	3/4"; 7/8"	0.51	1/4-28	0.94	1.18	0.69	0.25	0.51	0.71	0.25	0.16	1/4-28
NY-106	1 1/16	0.51	5/16-24	0.94	1.18	0.69	0.25	0.51	0.71	0.25	0.19	5/16-24
NY-125	1 1/4"; 1 1/2"	0.75	7/16-20	1.31	1.69	0.94	0.38	0.75	1.02	0.38	0.25	7/16-20

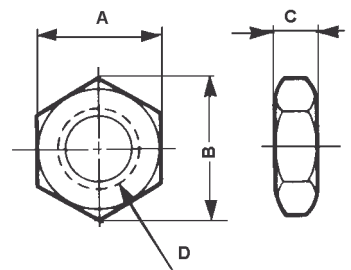


ACCESSORIES

SERIES NCM

JAM NUT (ROD THREAD)

Part No	Applicable Bore	A	B	C	D
JM-025	3/4"; 7/8"	0.44	0.51	0.16	1/4-28 UNF
JM-03	1 1/16	0.50	0.50	0.19	5/16-24 UNF
JM-045	1 1/4"; 1 1/2"	0.69	0.79	0.26	7/16-20 UNF



SEE INSIDE FRONT COVER FOR
DETAILS OF YOUR LOCAL SALES OFFICE

