


**Ordering number C10949\_STRADA-B2**

Family	Strada-B2	FWHM	116+44 degrees
Type	Lens	Efficiency	92 %
LED	XP-E	cd/lm	0.480
Color	Clear	Gerber File	Available
Diameter	19.6 + 15.5 mm		
Height	5.2 mm		
Style	Rectangular		
Optic Material	PMMA		
Holder Material	-		
Fastening	Screw, pin, glue		
Status	Ready		

**Ordering number CA10950\_STRADA-B2**

Family	Strada-B2	FWHM	116+44 degrees
Type	Assembly	Efficiency	92 %
LED	XP-E	cd/lm	0.480
Color	Clear	Gerber File	Available
Diameter	19.6 + 15.5 mm		
Height	5.4 mm		
Style	Rectangular		
Optic Material	PMMA		
Holder Material	-		
Fastening	Screw, pin, tape		
Status	Ready		

**NOTE: The typical divergence will be changed by different color, chip size and chip position tolerance. The typical total divergence is the full angle measured where the luminous intensity is half of the peak value.**



## PRODUCT DATASHEET Strada-B2 series

last update 8/8/2013

### GENERAL INFORMATION

- Product series especially designed & optimized for XP-E series of LEDs.
- Special care taken to make light distribution as uniform as possible.
- Lens material optical grade PMMA with high UV and temperature resistance (105 degrees of Celcius / 220 degrees of Fahrenheit). Allows use of high current and temperature conditions.

Please find more information about used material from below:

[http://ledil.fi/sites/default/files/Documents/Technical/Material/PMMA%20N%20UL94\\_Yellow%20Card.pdf](http://ledil.fi/sites/default/files/Documents/Technical/Material/PMMA%20N%20UL94_Yellow%20Card.pdf)

<http://ledil.fi/sites/default/files/Documents/Technical/Material/PMMA%20N%20PLEXIGLAS-Datasheet.pdf>

- Fastening to heat sink with a PU foam adhesive tape of automotive grade. Please find fastening details by clicking link: [http://www.ledil.com/datasheets/DataSheet\\_TAPE.pdf](http://www.ledil.com/datasheets/DataSheet_TAPE.pdf)

- Fastening to PCB with appropriate adhesive. By clicking link below you can find Ledil recommended glue options.

[http://www.ledil.com/datasheets/DataSheet\\_GLUES.pdf](http://www.ledil.com/datasheets/DataSheet_GLUES.pdf)

**NOTE 1: We advise customer to ensure the suitability and sufficiency of the bond in the end product. For example, mechanical stress, vibration and holes on the surface of the circuit board weaken the strength of the tape.**

**NOTE 2: Assembly to the surface must be made straight, so the tape bonds constant and balanced with fastening surface. Slanted assembly might cause unbalanced bond to the surface. All surfaces where tape is applied must be clean, dry and free from grease and dirt.**

**If cleaning of PCB surfaces is needed, please follow strictly the cleaning instructions of your LED manufacturer - this is important as cleaning shall under no circumstances damage LEDs or other electronics components on the PCB.**

**Further note that optical components shall not be cleaned with any chemicals - only micro fiber cloth may be used to remove fingerprints or other traces from handling.**

**NOTE 1: We advise customer to ensure the suitability and sufficiency of the bond in the end product. For example, mechanical stress, vibration and holes on the surface of the circuit board weaken the strength of the glue.**

**NOTE 2: All surfaces where glue is applied must be clean, dry and free from grease and dirt. If cleaning of PCB surfaces is needed, please follow strictly the cleaning instructions of your LED manufacturer -this is important as cleaning shall under no circumstances damage LEDs or other electronics components on the PCB.**

**Further note that optical components shall not be cleaned with any chemicals - only micro fiber cloth may be used to remove fingerprints or other traces from handling.**

D

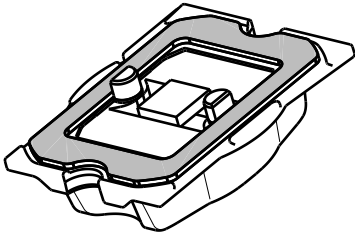
C

B

A

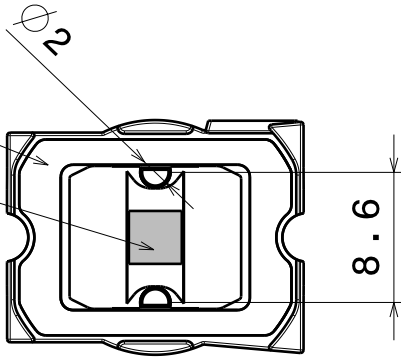
4

4



Tape

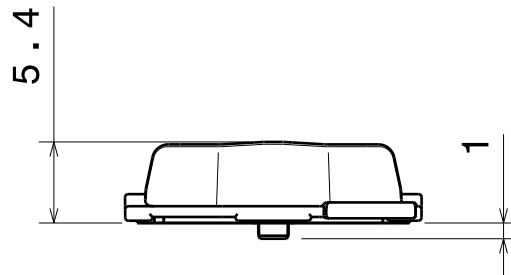
Led



Bottom view

3

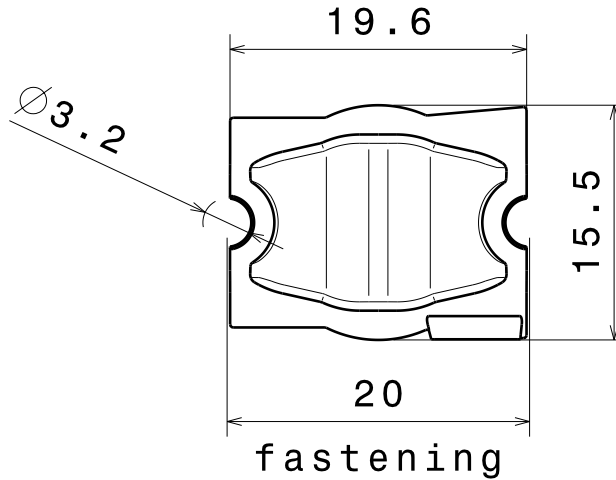
3



Front view

2

2



Top view

fastening

MATERIALS

Lens: PMMA

Tape: PU Foam

Part no. without tape fastening: C10949

This drawing is our property.  
It can't be reproduced  
or communicated without  
our written agreement.



Ledil Oy  
Tehdaskatu 13  
FIN-24100 SALO  
Finland

DRAWING TITLE

Datasheet Strada-B2-XP Assy

DRAWN BY

pv

DATE

13.08.2009

CHECKED BY

tk

DATE

12.06.2009

SIZE

A4

DRAWING NUMBER

CA10950

REV

0.1

DESIGNED BY

hh

DATE

12.06.2009

SCALE

2:1

WEIGHT (g)

SHEET

1/1

D

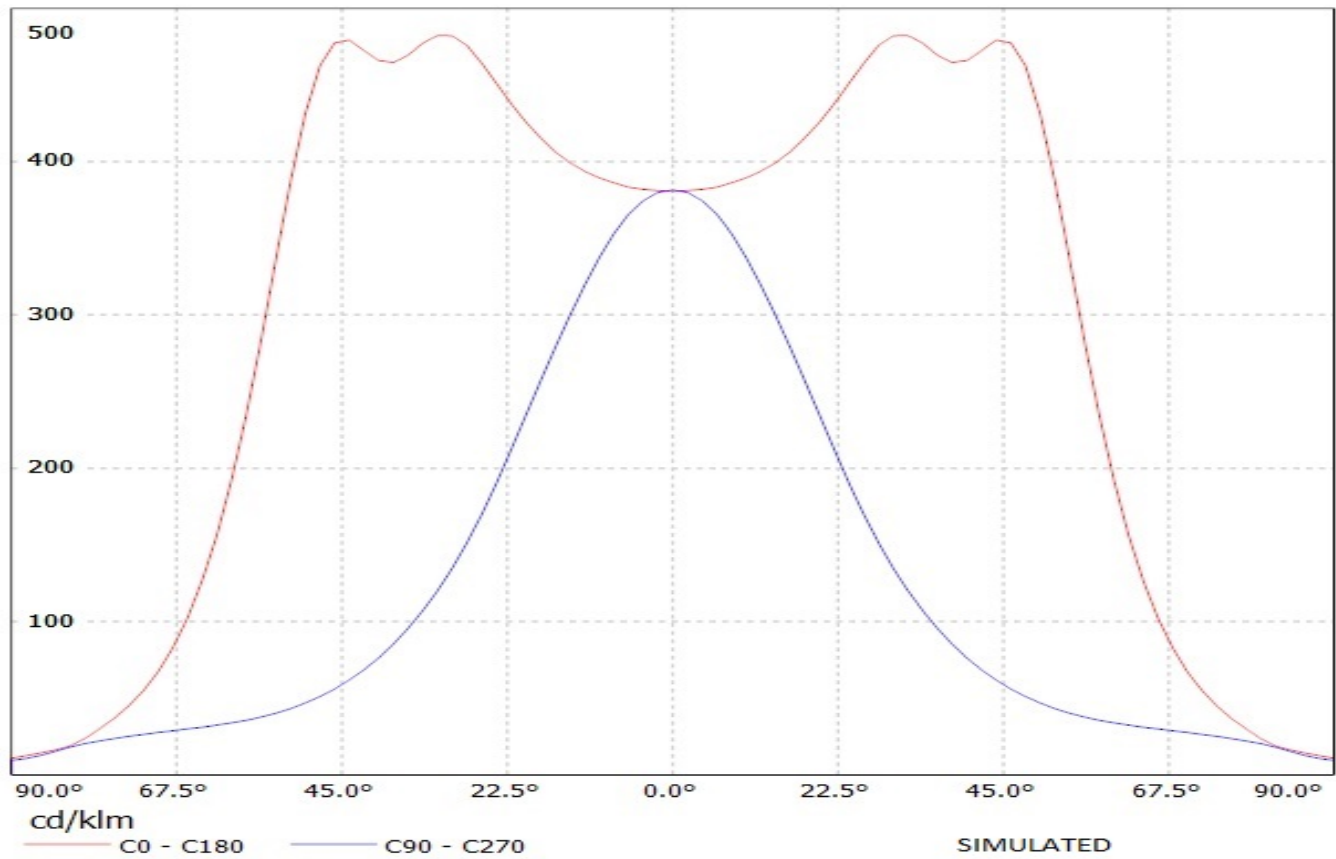
A

1

1

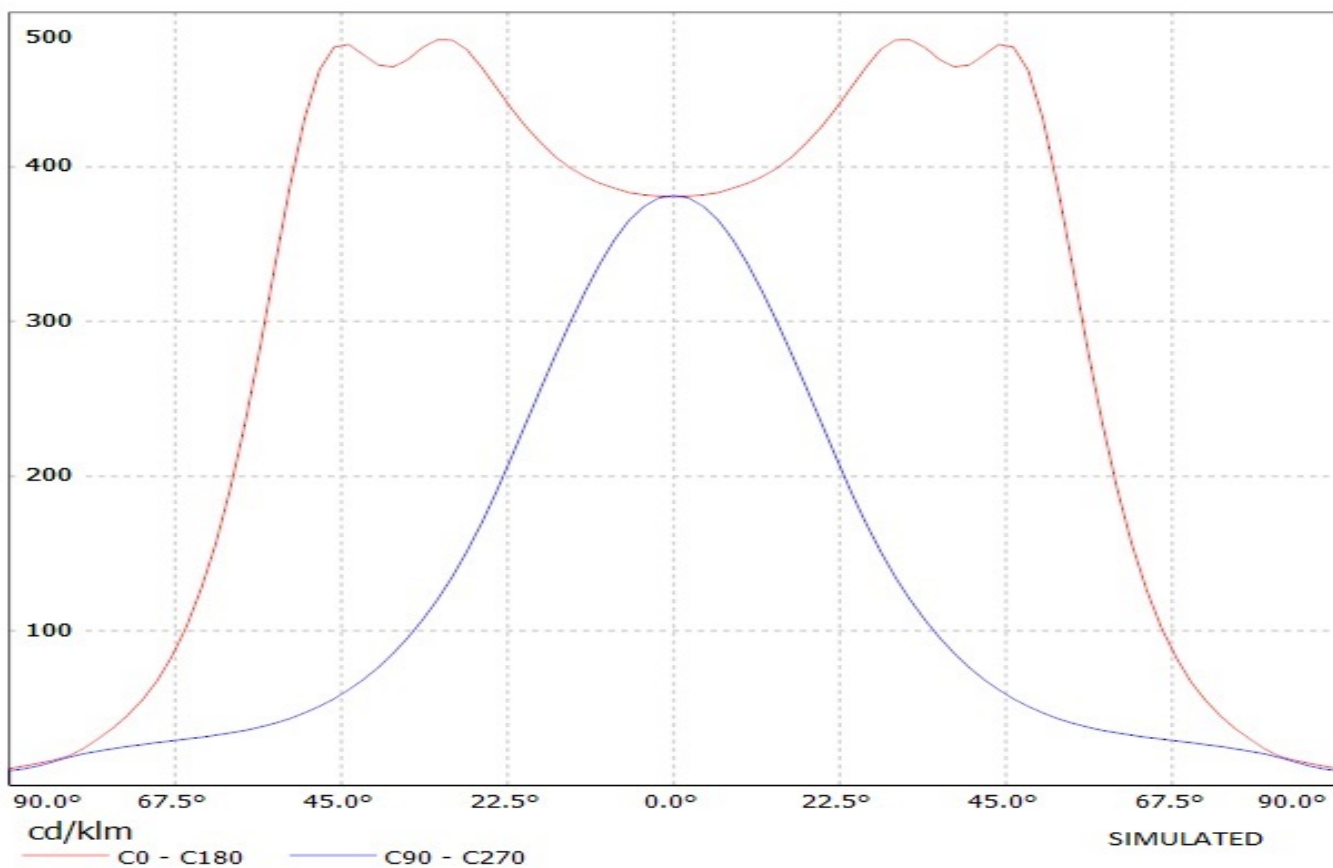
# Ledil Oy C10949\_Strada-B2-XP C10949\_Strada-B2-XP / LDC (Linear)

Luminaire: Ledil Oy C10949\_Strada-B2-XP C10949\_Strada-B2-XP  
Lamps: 1 x Cree XP-E (White)



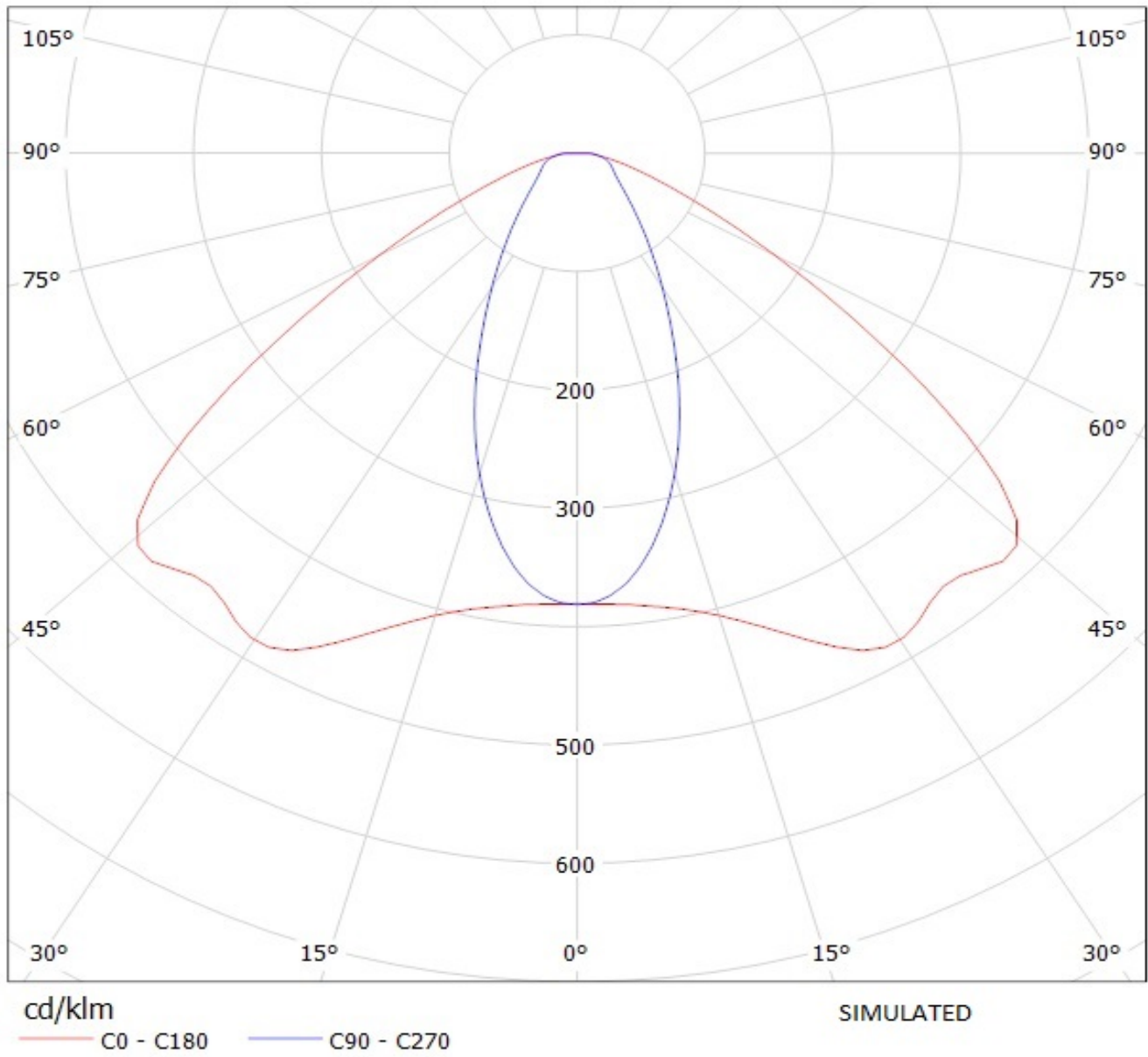
# Ledil Oy C10949\_Strada-B2-XP C10949\_Strada-B2-XP / LDC (Linear)

Luminaire: Ledil Oy C10949\_Strada-B2-XP C10949\_Strada-B2-XP  
Lamps: 1 x Cree XP-E (White)



# Ledil Oy C10949\_Strada-B2-XP C10949\_Strada-B2-XP / LDC (Polar)

Luminaire: Ledil Oy C10949\_Strada-B2-XP C10949\_Strada-B2-XP  
Lamps: 1 x Cree XP-E (White)



# Ledil Oy C10949\_Strada-B2-XP C10949\_Strada-B2-XP / LDC (Polar)

Luminaire: Ledil Oy C10949\_Strada-B2-XP C10949\_Strada-B2-XP  
Lamps: 1 x Cree XP-E (White)

