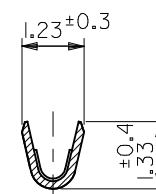
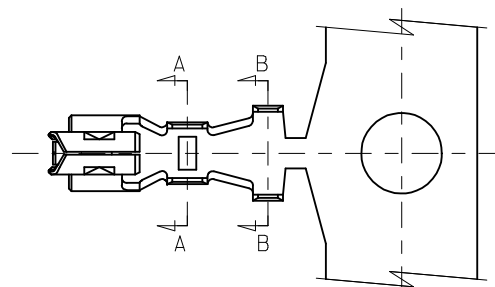


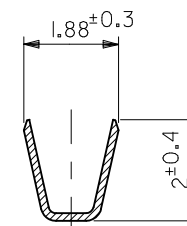
10 9 8 7 6 5 4 3 2 1

注記

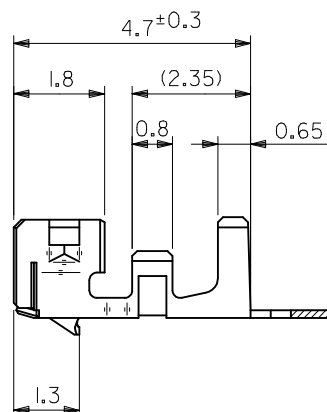
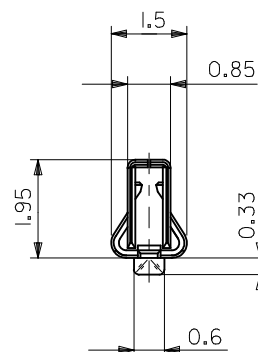
- 適用ハウジング： 51065-\*\*\*00  
APPLICABLE HOUSING 51089-\*\*\*05  
51090-\*\*\*00
- 材質：  
MATERIAL  
リン青銅  
PHOSPHOR BRONZE  
錫メッキ  
PRE-TINNED  
 $t=0.152$



SECT. A-A

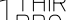


SECT. B-B



50212-8100	バラ状
50212-8000	連鎖状
MATERIAL NO.	端子形状

適用電線範囲 WIRE RANGE	AWG #24~#30
被覆外径 INS. RANGE	φ1.4MAX.

REVISED EC NO: J2009-2125 DRWN: CARIZONO 2009/03/25 CHKD: T. HARUYAMA 2009/04/07 APPR: NUKITA 2009/04/08 REV D	DESCRIPTION	GENERAL TOLERANCES (UNLESS SPECIFIED)		DIMENSION STYLE MM ONLY		SCALE 10:1	DESIGN UNITS METRIC	 THIRD ANGLE PROJECTION	
		10 UNDER	±0.2	DRAWN BY C. ARIZONO	DATE 09/03/19	TITLE NEW 2.0 WIRE TO BOARD CONN. CRIMP RECEPTACLE			
		10 OVER 30 UNDER	±0.25	CHECKED BY T. HARUYAMA	DATE 09/03/19				
		30 OVER	±0.3	APPROVED BY N. UKITA	DATE 09/03/19				molex MOLEX INCORPORATED
		ANGULAR ±3 °		MATERIAL NO.		DOCUMENT NO.			
		DRAFT WHERE APPLICABLE MUST REMAIN WITHIN DIMENSIONS		SEE CHART		SD-50212-001			1 OF 1
		SIZE A3	THIS DRAWING CONTAINS INFORMATION THAT IS PROPRIETARY TO MOLEX INCORPORATED AND SHOULD NOT BE USED WITHOUT WRITTEN PERMISSION						

# Mouser Electronics

Authorized Distributor

Click to View Pricing, Inventory, Delivery & Lifecycle Information:

Molex:

50212-8100