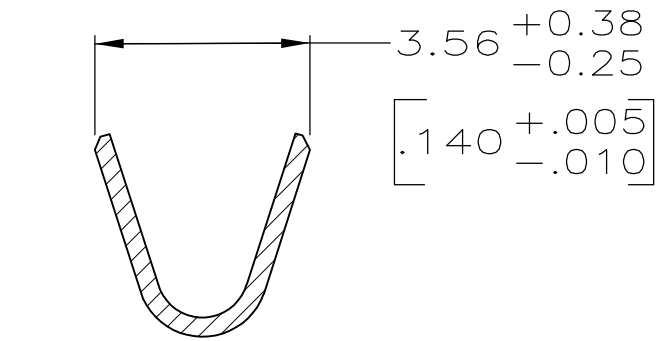
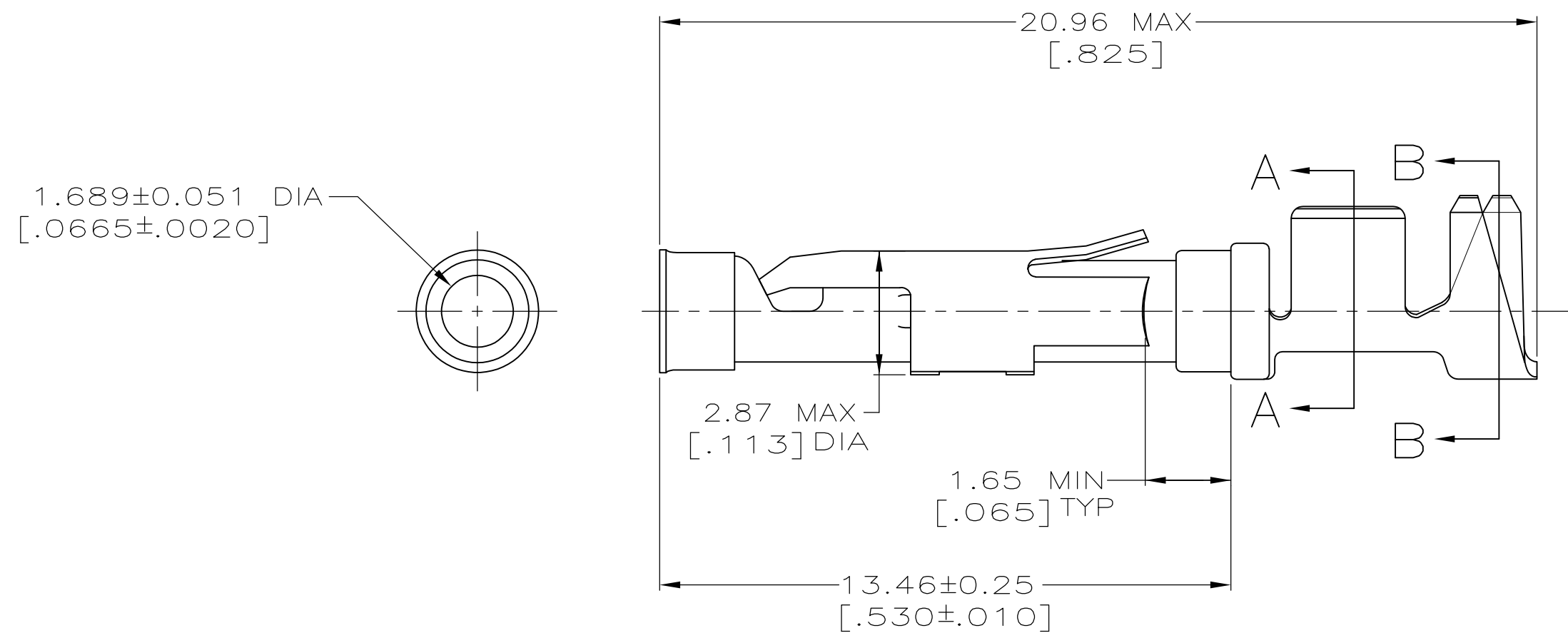
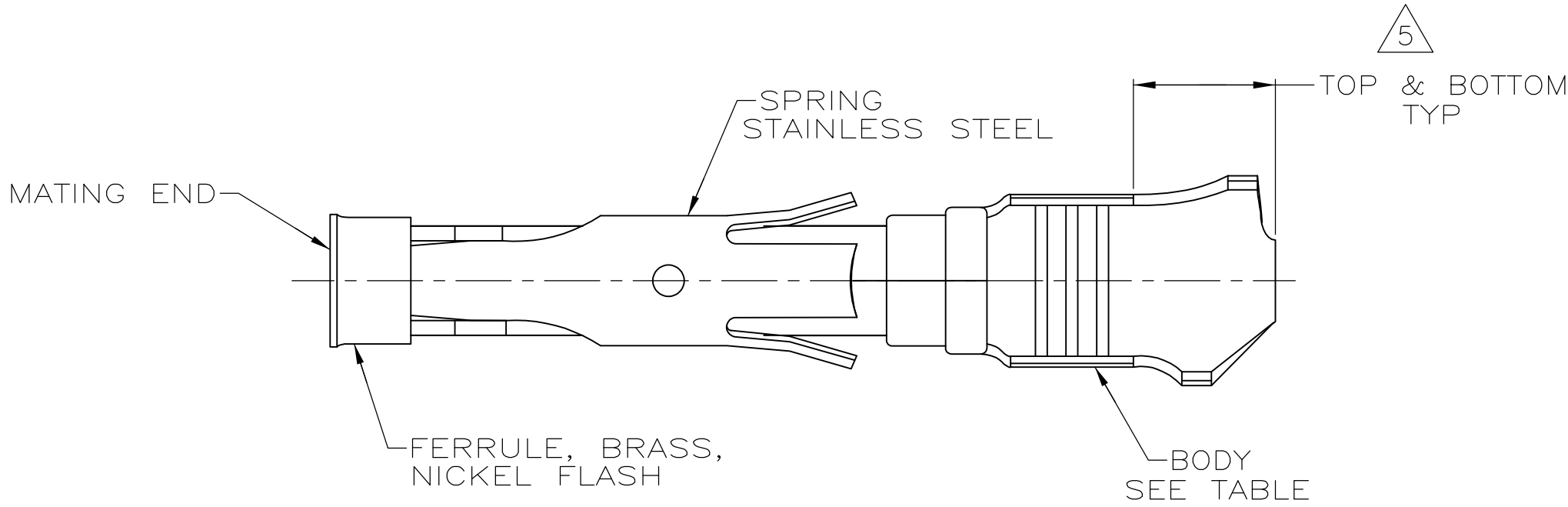
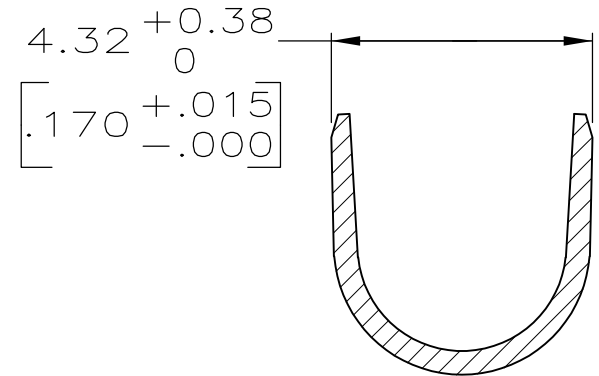


LOC	DIST	REVISIONS					
		P	LTR	DESCRIPTION	DATE	DWN	APVD
FT	0		V	REVISED PER ECO-12-012320	04JUL12	KH	MZ



SECTION A-A



SECTION B-B

1. 0.76 μm [.000030] MIN GOLD PER MIL-G-45204 ON MATING END FOR A LENGTH OF 5.08 [.200] MIN WITH GOLD FLASH ON THE REMAINDER OVER 0.76 μm [.000030] MIN NICKEL PER QQ-N-290.
2. 1.27 μm [.000050] MIN TIN-LEAD PER MIL-T-10727 OVER 0.76 μm [.000030] MIN NICKEL PER QQ-N-290.
3. BRASS PER MIL-C-50.
4. PHOSPHOR BRONZE PER QQ-P-750.
5. GOLD PLATING NEED NOT APPEAR IN THIS AREA.
6. WIRE RANGE 14-18 AWG.
INSULATION RANGE 2.79[.110]-3.81[.150].
7. 0.38 μm [.000015] MIN GOLD PER MIL-G-45204 ON MATING END FOR A LENGTH OF 5.08 [.200] MIN, 1.27 μm [.000050] MIN TIN-LEAD PER MIL-T-10727 FOR A LENGTH OF 5.69 [.224] MIN ON OPPOSITE END, BOTH OVER 1.27 μm [.000050] MIN NICKEL PER QQ-N-290 ON ENTIRE CONTACT.
8. 1.27 μm [.000050] MIN TIN PER MIL-T-10727 OVER 0.76 μm [.000030] MIN NICKEL PER QQ-N-290.
9. CU-NI ALLOY

10. 0.76 μm [.000030] MIN GOLD PER MIL-G-45204 ON MATING END FOR A LENGTH OF 5.08 [.200] MIN WITH 1.27 μm [.000050] MIN MATTE TIN PLATE IN WIRE CRIMP AREA, BOTH OVER 0.76 μm [.000030] MIN NICKEL PER QQ-N-290.

	SMALL PACK	8	3	66598-9	1-66601-3
	STANDARD	8	9	1-66598-2	1-66601-2
	STANDARD	1	9	1-66598-1	1-66601-0
	STANDARD	8	3	66598-9	66601-9
	SMALL PACK	10	3	66598-2	66601-8
	SMALL PACK	2	3	66598-1	66601-7
OBSOLETE	STANDARD	7	3	66598-8	66601-5
OBSOLETE	STANDARD	1	4	66598-6	66601-4
OBSOLETE	STANDARD	2	4	66598-5	66601-3
	STANDARD	10	3	66598-2	66601-2
	STANDARD	2	3	66598-1	66601-1
	PACKAGING	BODY FINISH	BODY MATERIAL	STRIP P/N REF	PART NO.

THIS DRAWING IS A CONTROLLED DOCUMENT.		DWN	7-31-91	TE Connectivity		
		CHK	9-20-91			
		APVD	9-20-91	NAME SOCKET ASSEMBLY, LOOSE PIECE, TYPE III+		
		PRODUCT SPEC				
		APPLICATION SPEC		SIZE A2		
		WEIGHT	-			
		CUSTOMER DRAWING		SCALE 8:1		
				SHEET 1 OF 1		
				REV V		

Mouser Electronics

Authorized Distributor

Click to View Pricing, Inventory, Delivery & Lifecycle Information:

[TE Connectivity:](#)

[66601-9](#)